

---

# **Muckhart Community Plan**

---

*- Initial Analysis of Community Plan Questionnaire Data*



**Muckhart: Clackmannanshire's Gateway to the Ochils**

**Released: March 2017**

Philip Lord / Mike Wilson

Muckhart Community Council

## Table of Contents

Table of Contents .....	2
A. Questionnaire Analyses: Description.....	3
B. Overall Response Statistics .....	5
C. Characterising the Population Responding.....	6
D. Vision for Muckhart .....	9
1. Image of the Village .....	10
2. Infrastructure .....	14
3. Sustainability & Environment.....	27
4. Active Community .....	30
5. Education.....	32
6. Housing .....	37
7. Business Development.....	47
8. Public Services .....	50

## A. Questionnaire Analyses: Description

### The Statistics

The statistics summarising the results of the survey are presented in separate sections below, corresponding to the sections used in the survey itself. In order to provide context at the start of this document the basic response statistics are given first in section B below, and the “About you” statistics are brought to the front in section C.

The results from the various sections of the questionnaire (including ‘Vision for Muckhart’ - section D) covering ‘Image of the Village’ through to ‘Public Services’, are then presented in order in sections 1 to 8 below.

For the characteristics of the responders to the questionnaire in section C, for each question the numbers are given for each possible response (Including numbers skipping the question) and percentages for each of these over all 115 responses, The figures are accompanied by a chart, either a bar chart or pie chart, as considered appropriate. Some basic commentary is also added where appropriate.

For the questions in the bulk of the survey, the following is provided in order:

- Basic statistics: the number answering the question (and percentage over 115); the number of times the question was skipped (and percentage); the total of these (to check – should be 115 and 100%); and the mean, mode and the median of the responses given on the scale 0 to 10 (see description below)
- The distribution of answers (on the scale 0 to 10, plus the number of no answers – i.e. counts of the answers to each of these values. They are also expressed as percentages over all 115 records and over the number answering that question
- A histogram showing the responses to each possible value (including the number of skips in red). For a few questions where a matrix was employed the graph is shown in 3-D format
- A basic commentary, highlighting some key results
- If there was a supplementary question asking about ‘Willingness to be involved’, then the numbers (and percentages) of those answering ‘Yes’, ‘No’, ‘Maybe’ and skipping the question are given, together with a pie chart

### Notes on: Mean, Mode, Median, etc.

These are all measures of what is generally referred to as an average; a single figure characterising the answers as a whole.

The Mean is obtained by adding up all the answers and dividing by the number of numbers and is most commonly used. However, it can be unduly influenced by extreme values.

The Mode is the value which most people answer and, as such, may be thought of as the representative value; interestingly, in this survey nearly all the modal values were 10 (i.e. complete agreement) even though the Mean or Median were much less than 10.

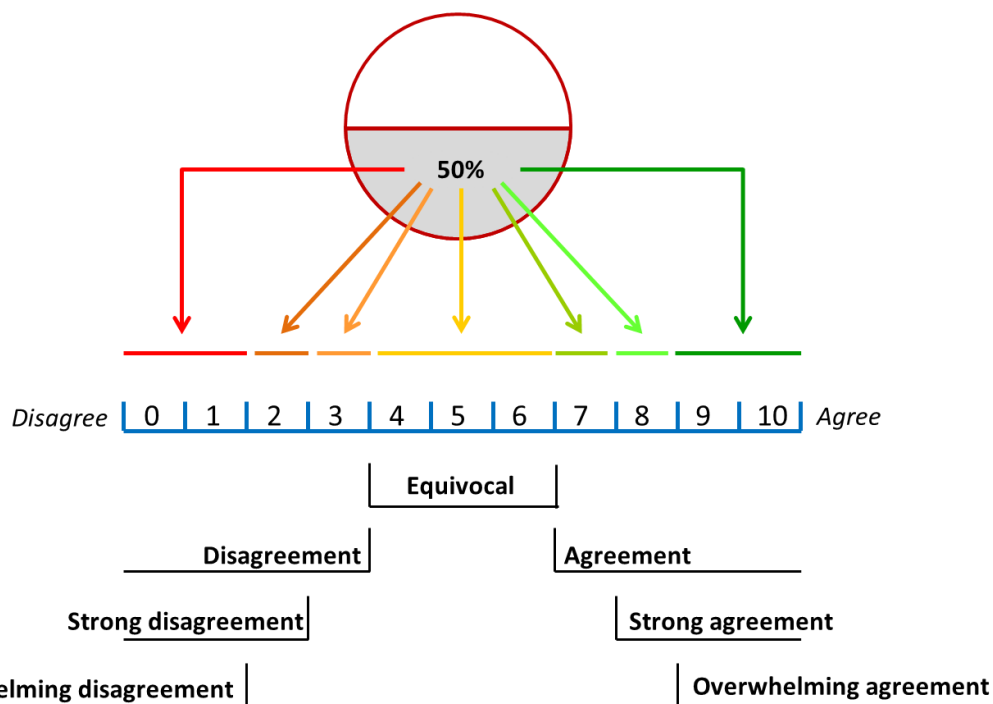
The Median is the value that lies in the middle of the set of answers – imagine all the answers to a question set out in a list from smallest to largest – the Median is the value in the middle of the list. It is not influenced by extreme values, thus, might be considered the best average to use. Therefore, we have used the Median throughout the analysis to represent the ‘best average’ of the response totals.

**Please Note: where the *MEDIAN* score is 8 or greater, we have concluded that there is *STRONG* agreement with the statement / conclusion.**

**Where the *MEDIAN* score is 9 or greater, we have concluded that there is *OVERWHELMING* agreement with the statement / conclusion.**

**The opposite is true where the *MEDIAN* score is 2 or less. See the diagram below to explain this ‘measurement’:**

### Where the middle point (median) lies determines our classification



We did not attempt to do anything more sophisticated, such as looking at how the answers to questions varied.

### Further Analyses

In a few cases it was felt useful to analyse the figures for a question in relation to a parameter such as sex, age or in which part of the village people lived. Notes are provided in the text where this is the case.

Some possible further analyses can be undertaken, following the initial review of the data, for example, by future MCC Sub-groups.

## B. Overall Response Statistics

### Response rate statistics

	<b>Number</b>	<b>%</b>	<b>From</b>
<b>Total raw records received:</b>	122		
<b>Duplicates/false starts (removed):</b>	7	5.7	122
<b>Useable records:</b>	115	94.3	"
<b>Incomplete but useable:</b>	3	2.6	115
<b>Missing last page, otherwise complete:</b>	5	4.3	"
<b>Entered online:</b>	77	67.0	"
<b>Paper submissions:</b>	38	33.0	"
<b>Estimate number of households:</b>	210		
<b>Estimated number of households responding:</b>	104	49.5	210
<b>Estimated eligible population (&gt;15):</b>	400		
<b>Estimated individual response rate:</b>		28.8	400

#### Notes:

1. The total number of households in the MCC area is assumed to correspond to the number of paper questionnaires delivered (as shown below). The estimated size of the eligible population is obtained by roughly doubling the estimated number of households, assuming the effect of single occupancy homes is more or less balanced by those with children. The figure of 400 more or less the same as the voters of 16 and over in the MCC area of 408.
2. The number of households responding is obtained from (i) the number of unique IP addresses of those completing on-line (very few households have more than one IP address), and (ii) the number of paper questionnaires submitted, assuming we had no households submitting more than one (which seems to be correct from inspecting them).

### Replies per household (i.e. by IP address)

**93** *Single response households*  
**11** *Double response households*  
**0** *Triple responses households*

### Distribution of paper copies

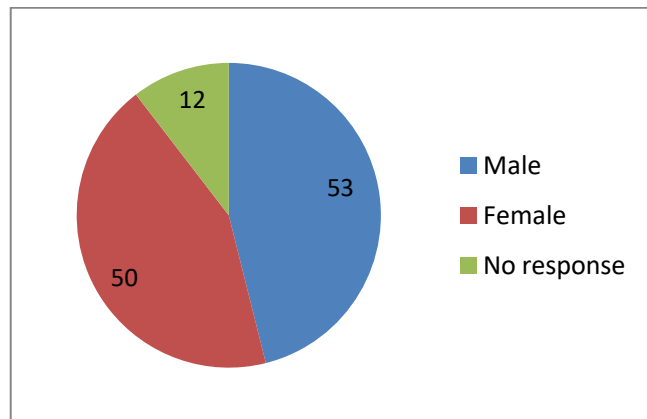
<b>Pool/main road in village (A91)</b>	41
<b>Cairns Place / Kirkhill</b>	33
<b>School Rd, Golf View,</b>	27
<b>Drumburn Rd</b>	14
<b>Golf Course Rd</b>	23
<b>A91 outwith village, Muckhart Mill</b>	15
<b>Yetts, Upper Yetts</b>	50
<b>Blairhill</b>	7
<b>Total</b>	<b>210</b>

## C. Characterising the Population Responding

This information is copied from the Analysis Excel file tab "About You".

### Question 39: Your sex:

	Number	%
Male	53	46.1
Female	50	43.5
No response	12	10.4
	115	100.0

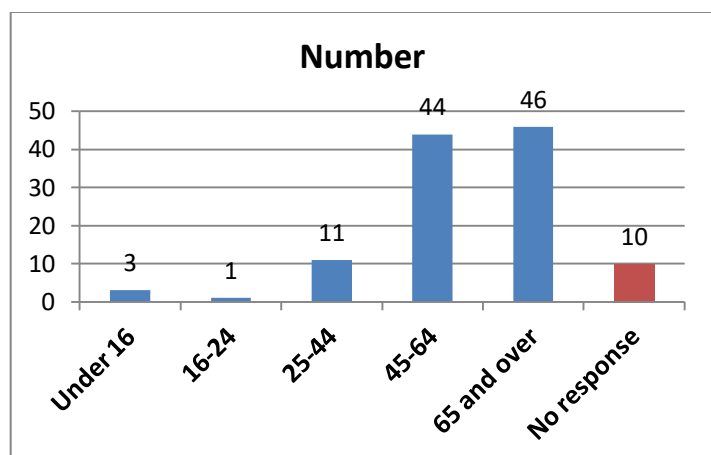


#### Commentary:

There were roughly equal numbers of male and female respondents.

### Question 40: Your age:

	Number	%
Under 16	3	2.6
16-24	1	0.9
25-44	11	9.6
45-64	44	38.3
65 and over	46	40.0
No response	10	8.7
	115	100.0

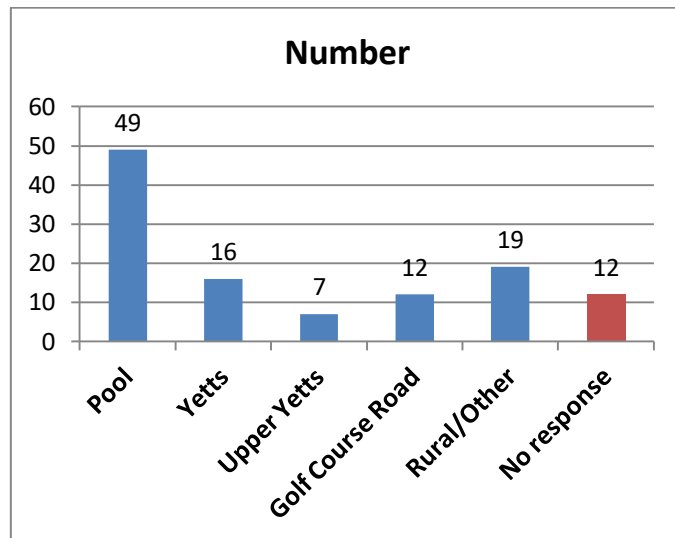


#### Commentary:

As expected, the population responding was predominantly over 45 (78.3% of responses).

**Question 41: In which part of Muckhart do you live?**

	Number	%
Pool	49	42.6
Yetts	16	13.9
Upper Yetts	7	6.1
Golf Course Road	12	10.4
Rural/Other	19	16.5
No response	12	10.4
	115	100.0

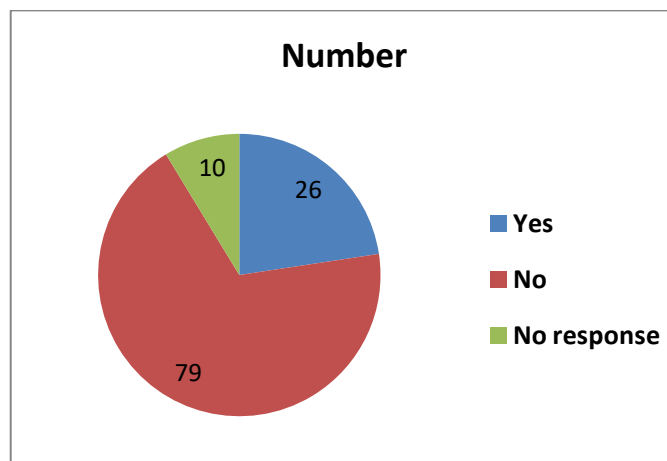


**Commentary:**

This distribution probably represents the actual distribution of people (and households) across the MCC area. Clearly the greatest concentration is in the Pool itself.

**Question 42: I am responsible for a child / children under the age of 16**

	Number	%
Yes	26	22.6
No	79	68.7
No response	10	8.7
	115	100.0



**Commentary:**

Just under a quarter of all respondents reported being responsible for children under 16.

**Question 43: If you would like to receive a copy of the final Community Plan, please provide your contact details (email and / or postal address) here.**

	<b>Number</b>	<b>%</b>
<b>Supplied</b>	52	45.2
<b>No response</b>	63	54.8
	115	100.0

**Commentary:**

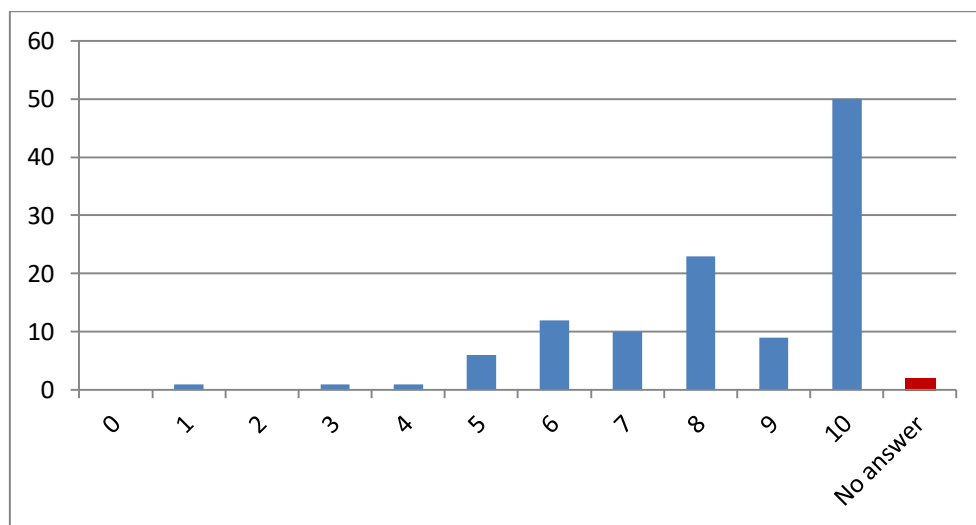
Nearly half the respondents have requested a copy of the Community Plan (**note: details held separately and confidentially**).



## D. Vision for Muckhart

**Qu: 1** I believe that the above vision statement for Muckhart suitably describes the positive aspirations for the future of our community.

Basic statistics			Distribution		
	Number	%	Value	Count	% over all
<b>Answered</b>	113	98.3	0	0	0.0
<b>Not answered</b>	2	1.7	1	1	0.9
<b>Total:</b>	115	100.0	2	0	0.0
<b>Mean:</b>	8.36		3	1	0.9
<b>Mode:</b>	10		4	1	0.9
<b>Median:</b>	9		5	6	5.2
			6	12	10.4
			7	10	8.7
			8	23	20.0
			9	9	7.8
			10	50	43.5
			No answer	2	1.7



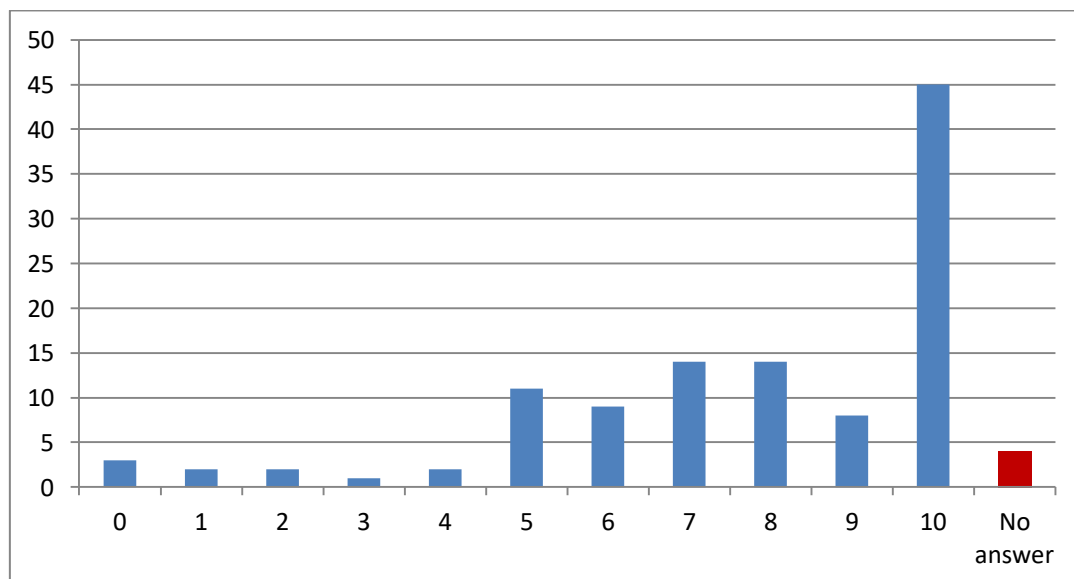
### Commentary:

Nearly unanimous positive response obtained (92% of scores were over 5), and the most frequent response being in complete agreement with the statement (score 10).

## 1. Image of the Village

**Qu2** I support preparing the village for entry into Scotland's 'Village in Bloom' competition in 2017.

Basic statistics			Distribution		
	Number	%	Value	Count	% over all
<b>Answered</b>	111	96.5	0	3	2.6
<b>Not answered</b>	4	3.5	1	2	1.7
<b>Total:</b>	115	100.0	2	2	1.7
<b>Mean:</b>	7.73		3	1	0.9
<b>Mode:</b>	10		4	2	1.7
<b>Median:</b>	8		5	11	9.6
			6	9	7.8
			7	14	12.2
			8	14	12.2
			9	8	7.0
			10	45	39.1
			No answer	4	3.5

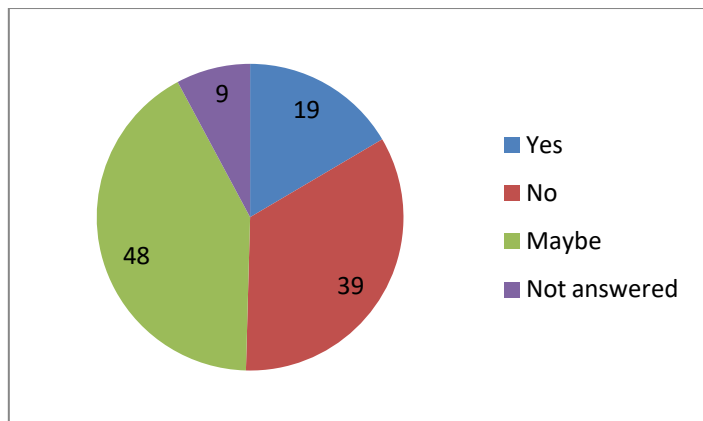


### Commentary:

Nearly unanimous positive response obtained (81.1% of scores were over 5), and the most frequent response being in complete agreement with the statement (score 10).

**Willing to be involved?**

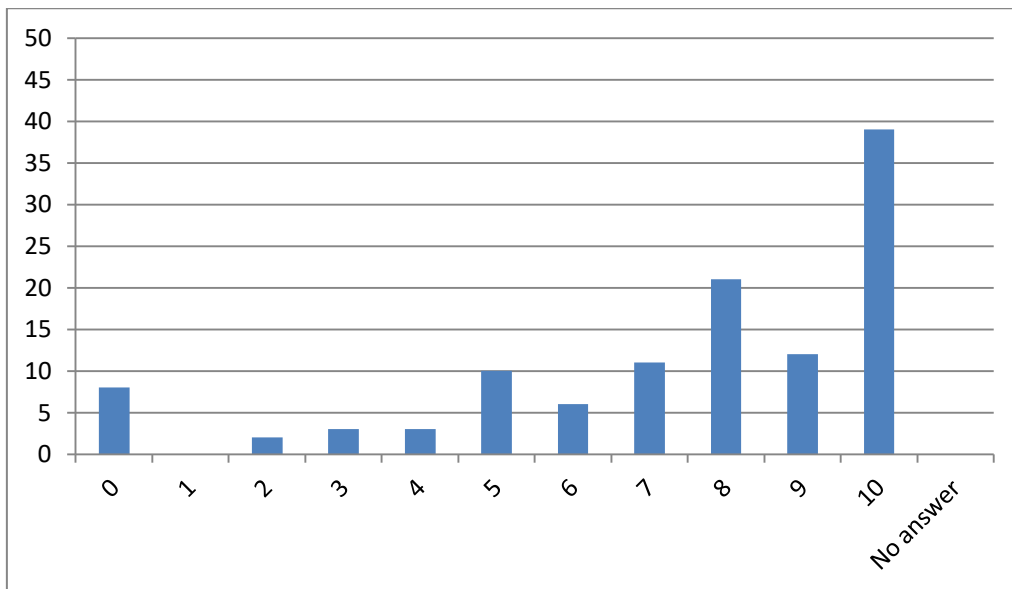
	<b>Number</b>	<b>%</b>
<b>Yes</b>	19	16.5
<b>No</b>	39	
<b>Maybe</b>	48	
<b>Not answered</b>	9	7.8
<b>Total:</b>	115	24.3



**Qu4**

**I support the development of an attractive visitor area, complete with a picnic area, information boards and limited parking, in the vicinity of the church.**

Basic statistics			Distribution		
	Number	%	Value	Count	% over all
Answered	115	100.0	0	8	7.0
Not answered	0	0.0	1	0	0.0
<b>Total:</b>	115	100.0	2	2	1.7
<b>Mean:</b>	7.43		3	3	2.6
<b>Mode:</b>	10		4	3	2.6
<b>Median:</b>	8		5	10	8.7
			6	6	5.2
			7	11	9.6
			8	21	18.3
			9	12	10.4
			10	39	33.9
			No answer	0	0.0



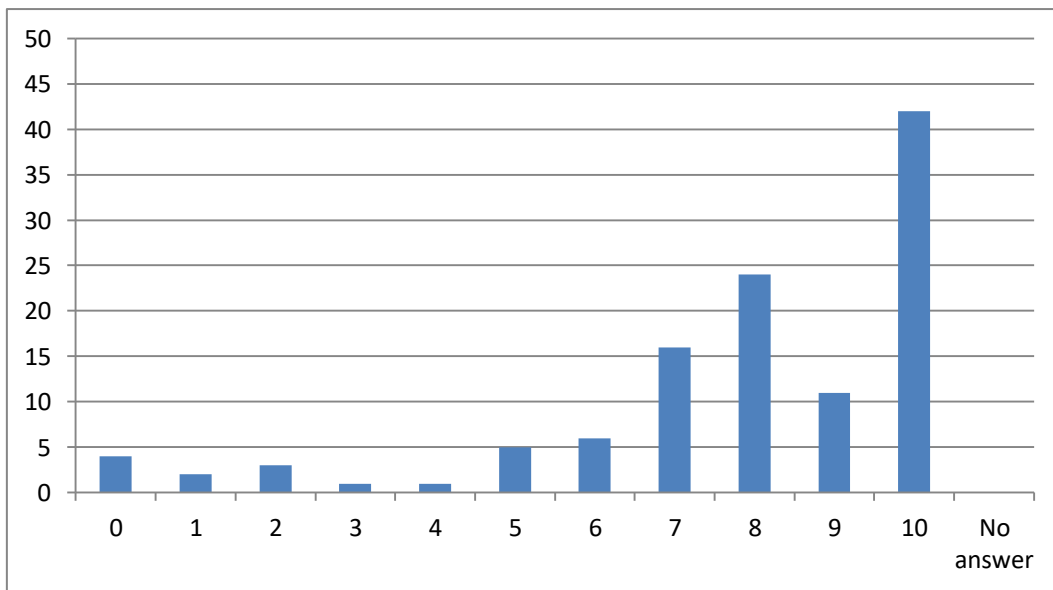
**Commentary:**

Nearly unanimous positive response obtained (77.4% of scores were over 5), and the most frequent response being in complete agreement with the statement (score 10).

**Qu5**

**I support undertaking a feasibility study to improve the area around the Coronation Hall, developing it into a more attractive public space (i.e. a village square).**

Basic statistics			Distribution		
	<b>Number</b>	<b>%</b>	<b>Value</b>	<b>Count</b>	<b>% over all</b>
<b>Answered</b>	115	100.0	0	4	3.5
<b>Not answered</b>	0	0.0	1	2	1.7
<b>Total:</b>	115	100.0	2	3	2.6
<b>Mean:</b>	7.82		3	1	0.9
<b>Mode:</b>	10		4	1	0.9
<b>Median:</b>	8		5	5	4.3
			6	6	5.2
			7	16	13.9
			8	24	20.9
			9	11	9.6
			10	42	36.5
			No answer	0	0.0



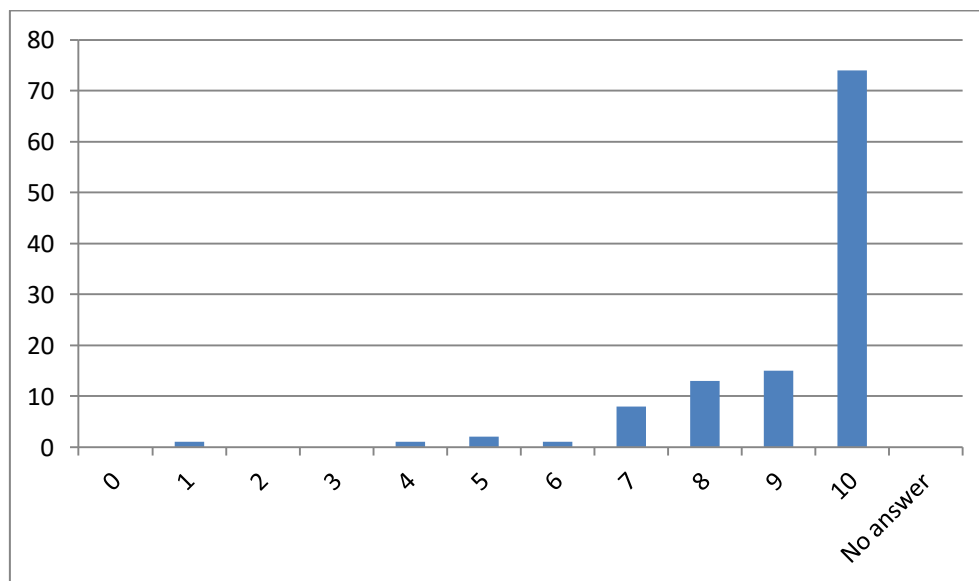
**Commentary:**

Nearly unanimous positive response obtained (86.1% of scores were over 5), and the most frequent response being in complete agreement with the statement (score 10).

## 2. Infrastructure

**Qu6** Local roads, pavements, foot and cycle paths require regular maintenance to provide improved and safer surfaces.

Basic statistics			Distribution		
	Number	%	Value	Count	% over all
Answered	115	100.0	0	0	0.0
Not answered	0	0.0	1	1	0.9
<b>Total:</b>	115	100.0	2	0	0.0
<b>Mean:</b>	9.18		3	0	0.0
<b>Mode:</b>	10		4	1	0.9
<b>Median:</b>	10		5	2	1.7
			6	1	0.9
			7	8	7.0
			8	13	11.3
			9	15	13.0
			10	74	64.3
			No answer	0	0.0



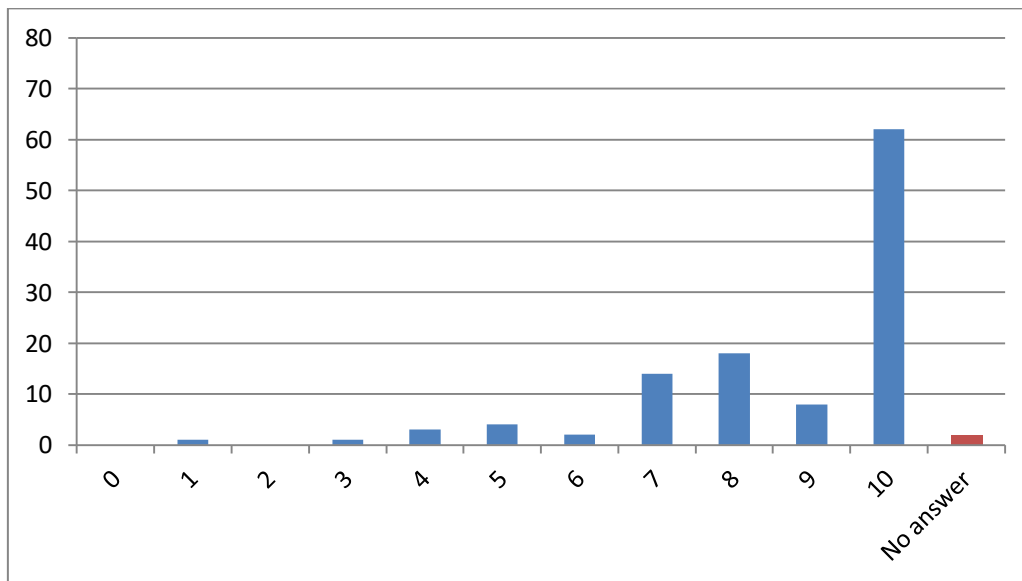
### Commentary:

Nearly unanimous positive response obtained (96.5% of scores were over 5), and the most frequent response being in complete agreement with the statement (score 10).

**Qu7**

**The cutting back of overgrown vegetation needs to be improved and should be undertaken as part of the routine maintenance programme for our local roads, verges, pavements, foot and cycle paths.**

Basic statistics			Distribution		
	Number	%	Value	Count	% over all
Answered	113	98.3	0	0	0.0
Not answered	2	1.7	1	1	0.9
<b>Total:</b>	115	100.0	2	0	0.0
<b>Mean:</b>	8.69		3	1	0.9
<b>Mode:</b>	10		4	3	2.6
<b>Median:</b>	10		5	4	3.5
			6	2	1.7
			7	14	12.2
			8	18	15.7
			9	8	7.0
			10	62	53.9
			No answer	2	1.7



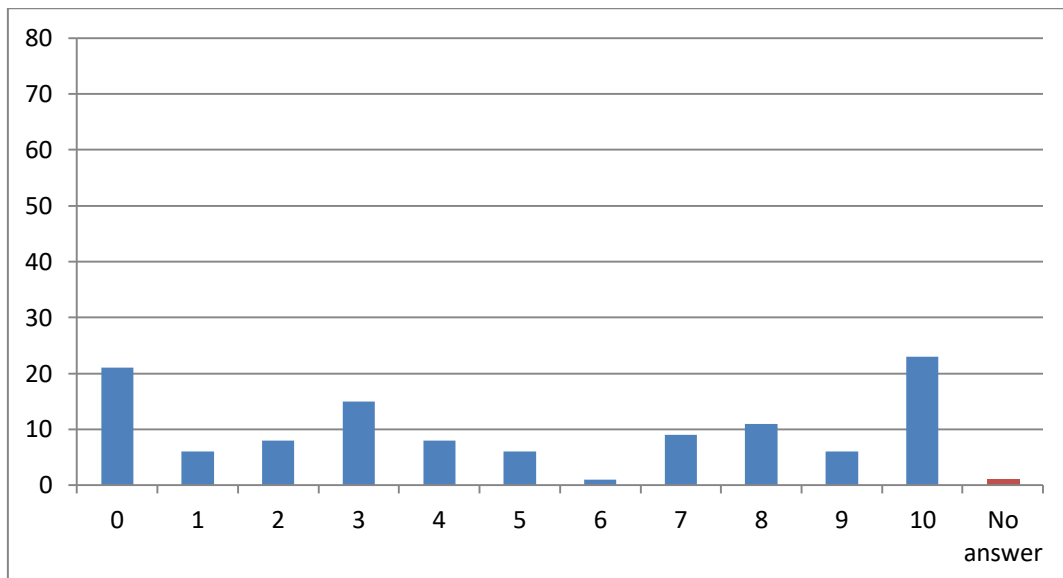
**Commentary:**

Nearly unanimous positive response obtained (92.0% of scores were over 5), and the most frequent response being in complete agreement with the statement (score 10).

**Qu8**

**There are sufficient traffic management measures in place, on the roads throughout the Muckhart area, to help control and reduce traffic speed.**

Basic statistics			Distribution		
	Number	%	Value	Count	% over all
Answered	114	99.1	0	21	18.3
Not answered	1	0.9	1	6	5.2
<b>Total:</b>	115	100.0	2	8	7.0
<b>Mean:</b>	5.00		3	15	13.0
<b>Mode:</b>	10		4	8	7.0
<b>Median:</b>	4		5	6	5.2
			6	1	0.9
			7	9	7.8
			8	11	9.6
			9	6	5.2
			10	23	20.0
			No answer	1	0.9



**Commentary:**

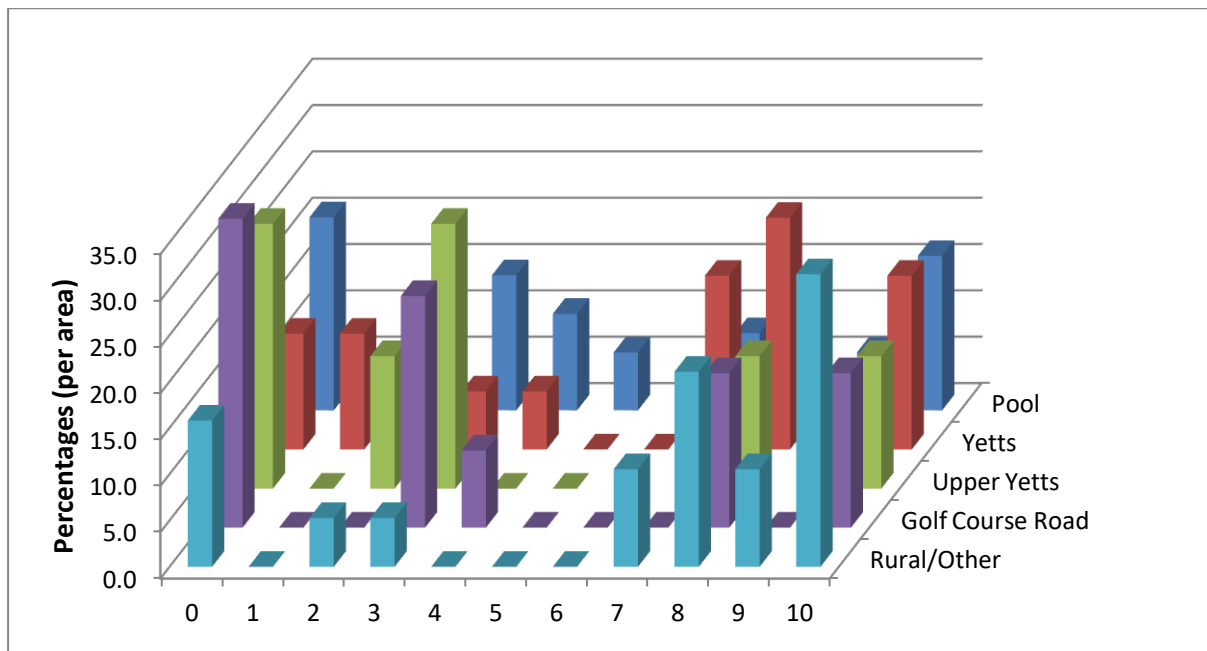
This question received a fairly negative response (56.1% of scores were 5 or less) though the most frequent response being in complete agreement with the statement (score 10).

**Possible further analysis:** Most comments relate to speeding issues and speed limits and the need to examine further options. This needs further analysis and actions agreed.



By percentage (per residence group i.e. column percentages)

	Pool	Yetts	Upper Yetts	Golf Course Road	Rural/Other
0	20.8	12.5	28.6	33.3	15.8
1	4.2	12.5	0.0	0.0	0.0
2	12.5	0.0	14.3	0.0	5.3
3	14.6	6.3	28.6	25.0	5.3
4	10.4	6.3	0.0	8.3	0.0
5	6.3	0.0	0.0	0.0	0.0
6	0.0	0.0	0.0	0.0	0.0
7	8.3	18.8	0.0	0.0	10.5
8	0.0	25.0	14.3	16.7	21.1
9	6.3	0.0	0.0	0.0	10.5
10	16.7	18.8	14.3	16.7	31.6
	100.0	100.0	100.0	100.0	100.0



Total percentage disagreeing with statement (score less than 5), by location:

Pool: **62.5%**

Yetts: **37.5%**

Upper Yetts: **71.4%**

Golf Course Road: **66.7%**

Rural / Other: **26.3%**

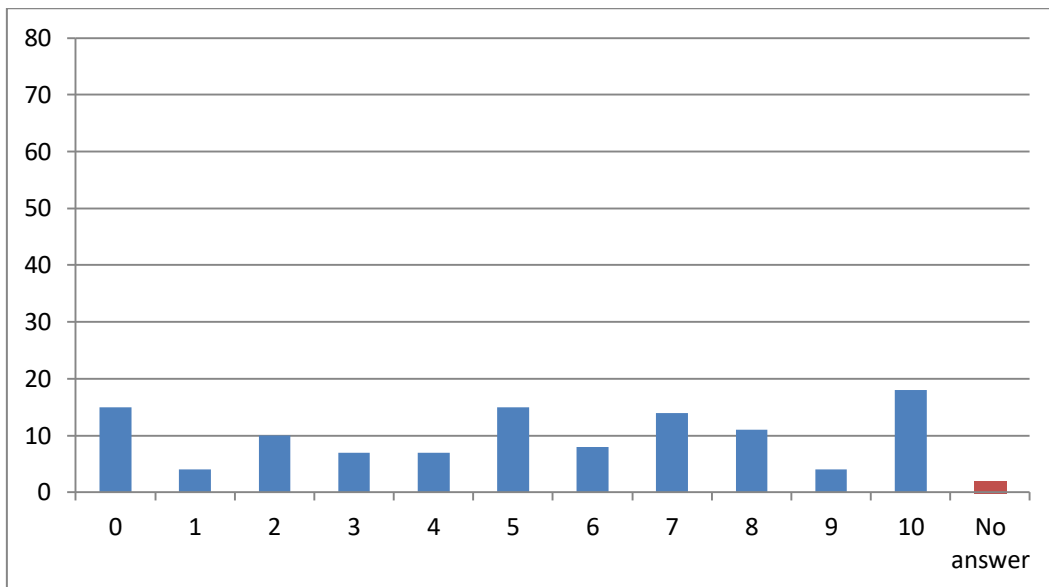
**Commentary:**

Those respondents residing in Upper Yetts, Golf Course Road and the Pool clearly believe that there are not sufficient traffic management measures in place in the Muckhart area.

**Qu9**

**There are a sufficient number of safe pedestrian crossing points on the main road (A91), in and around the Pool and Yetts o' Muckhart.**

Basic statistics			Distribution		
	Number	%	Value	Count	% over all
Answered	113	98.3	0	15	13.0
Not answered	2	1.7	1	4	3.5
<b>Total:</b>	115	100.0	2	10	8.7
<b>Mean:</b>	5.29		3	7	6.1
<b>Mode:</b>	10		4	7	6.1
<b>Median:</b>	5		5	15	13.0
			6	8	7.0
			7	14	12.2
			8	11	9.6
			9	4	3.5
			10	18	15.7
			No answer	2	1.7



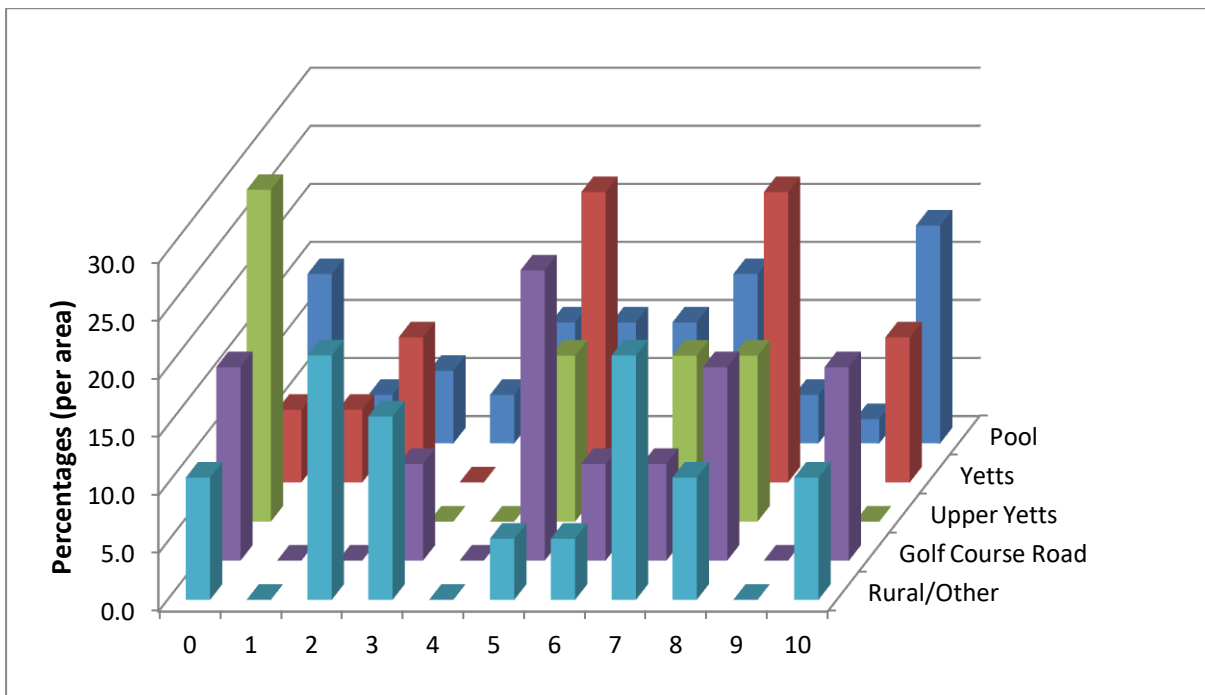
**Commentary:**

This question received a mixed response (51.3% of scores were 5 or less) again with the most frequent response being in complete agreement with the statement (score 10).

**Possible further analysis:** Several comments relate to requests for a further crossing in Pool and one in Yetts. Again, this needs further analysis and actions agreed.

By percentage (per residence group i.e. column percentages)

	Pool	Yetts	Upper Yetts	Golf Course Road	Rural/Other
0	14.6	6.3	28.6	16.7	10.5
1	4.2	6.3	14.3	0.0	0.0
2	6.3	12.5	0.0	0.0	21.1
3	4.2	0.0	0.0	8.3	15.8
4	10.4	0.0	0.0	0.0	0.0
5	10.4	25.0	14.3	25.0	5.3
6	10.4	0.0	14.3	8.3	5.3
7	14.6	6.3	14.3	8.3	21.1
8	4.2	25.0	14.3	16.7	10.5
9	2.1	6.3	0.0	0.0	0.0
10	18.8	12.5	0.0	16.7	10.5
	100.0	100.0	100.0	100.0	100.0



Total percentage disagreeing / agreeing with statement (score less than / more than 5):

Pool:	39.6%	50%
Yetts:	25.0%	50%
Upper Yetts:	42.9%	42.9%
Golf Course Road:	25.0%	50.0%
Rural / Other:	47.4%	47.4%

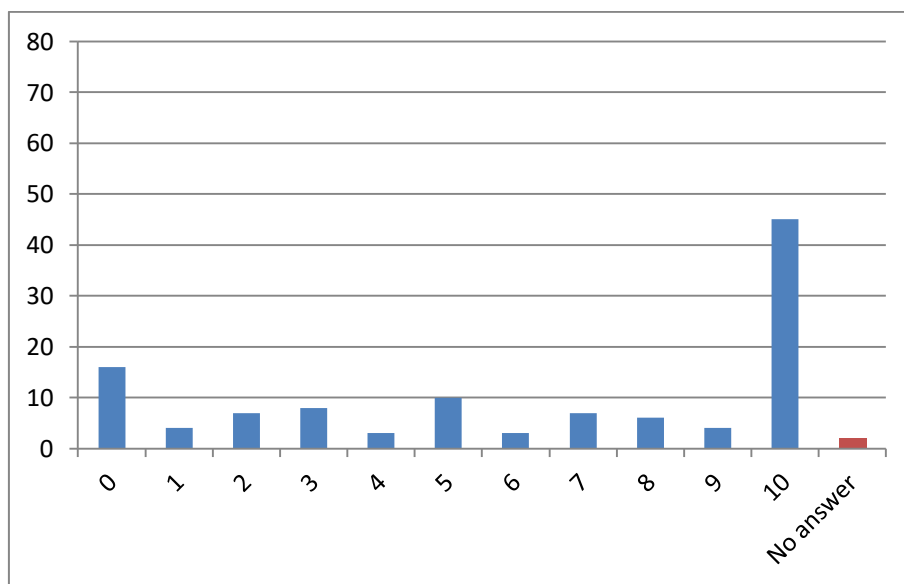
**Commentary:**

The 'split' results indicate a majority agreeing with the statement.

**Qu10**

The existing 40 MPH speed limit on the main road (A91) between the Yetts and the Pool, and on the main road (A823) into the Yetts from both Rumbling Bridge and Glendevon, requires to be replaced with a 30 MPH speed limit, to reduce speeding traffic and to improve road safety.

Basic statistics			Distribution		
	Number	%	Value	Count	% over all
Answered	113	98.3	0	16	13.9
Not answered	2	1.7	1	4	3.5
<b>Total:</b>	115	100.0	2	7	6.1
<b>Mean:</b>	6.24		3	8	7.0
<b>Mode:</b>	10		4	3	2.6
<b>Median:</b>	7		5	10	8.7
			6	3	2.6
			7	7	6.1
			8	6	5.2
			9	4	3.5
			10	45	39.1
			No answer	2	1.7

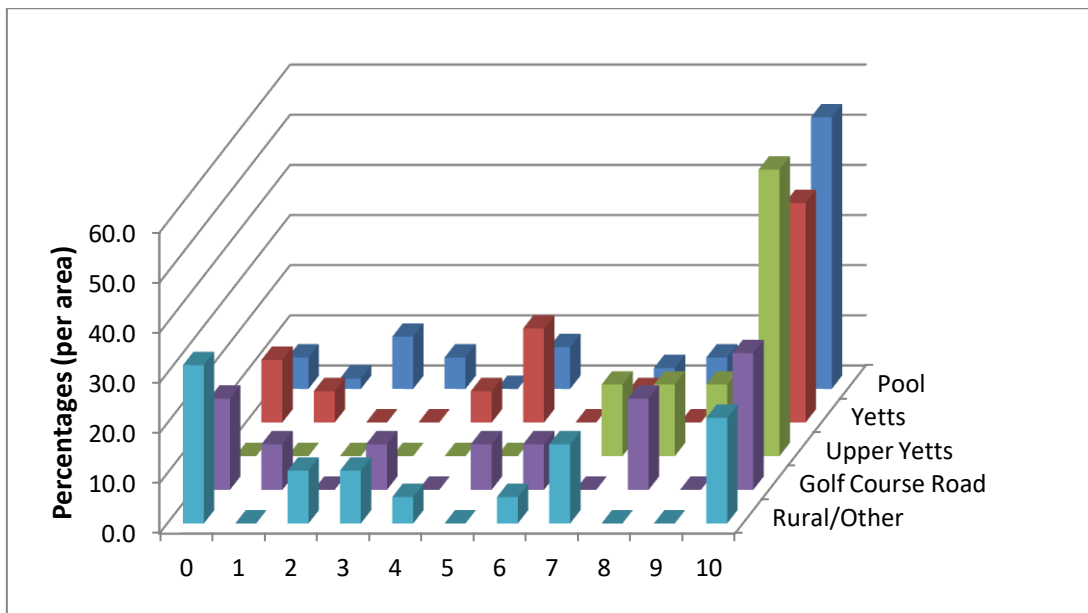


**Commentary:**

Largely positive response obtained (57.5% of scores were over 5) with by far the most frequent response being in complete agreement with the statement (score 10).

**By percentage (per residence group i.e. column percentages)**

	<b>Pool</b>	<b>Yetts</b>	<b>Upper Yetts</b>	<b>Golf Course Road</b>	<b>Rural/Other</b>
0	6.3	12.5	0.0	18.2	31.6
1	2.1	6.3	0.0	9.1	0.0
2	10.4	0.0	0.0	0.0	10.5
3	6.3	0.0	0.0	9.1	10.5
4	0.0	6.3	0.0	0.0	5.3
5	8.3	18.8	0.0	9.1	0.0
6	0.0	0.0	0.0	9.1	5.3
7	4.2	6.3	14.3	0.0	15.8
8	6.3	0.0	14.3	18.2	0.0
9	2.1	6.3	14.3	0.0	0.0
10	54.2	43.8	57.1	27.3	21.1
	100.0	100.0	100.0	100.0	100.0



**Total percentage agreeing with statement (score more than 5), by location:**

- Pool:** 66.7%
- Yetts:** 56.3%
- Upper Yetts:** 100.0%
- Golf Course Road:** 54.5%
- Rural / Other:** 42.1%

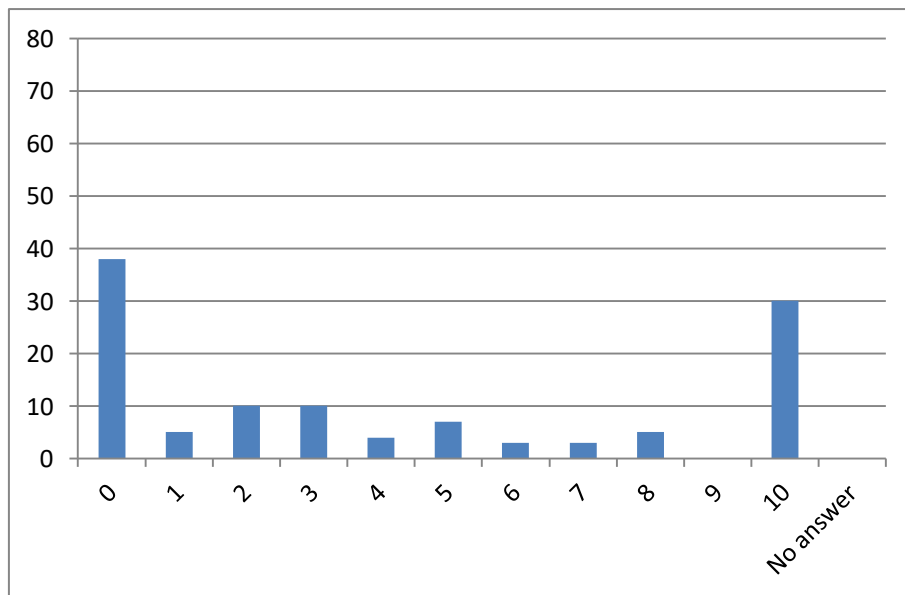
**Commentary:**

Those respondents residing in Upper Yetts unanimously, and those in the Pool strongly, agree with the statement and there is clear support also from those residing in Yetts and Golf Course Road.

**Qu11**

The existing 30 MPH speed limit on the main road (A91), throughout Pool of Muckhart, requires to be replaced with a 20 MPH speed limit, to reduce speeding traffic and to improve road safety.

Basic statistics			Distribution		
	Number	%	Value	Count	% over all
Answered	115	100.0	0	38	33.0
Not answered	0	0.0	1	5	4.3
Total:	115	100.0	2	10	8.7
Mean:	4.22		3	10	8.7
Mode:	0		4	4	3.5
Median:	3		5	7	6.1
			6	3	2.6
			7	3	2.6
			8	5	4.3
			9	0	0.0
			10	30	26.1
			No answer	0	0.0

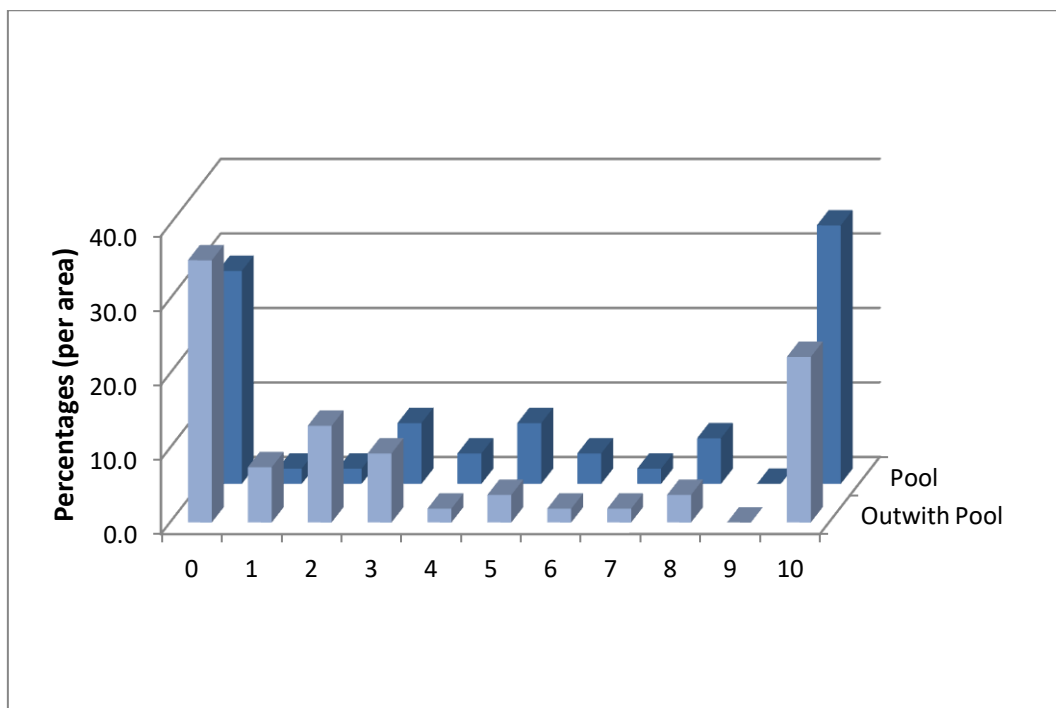


**Commentary:**

Largely negative response obtained (64.3% of scores were 5 or less) with by far the most frequent response being in total disagreement with the statement (score 0).

By percentage (per residence group i.e. column percentages)

	Pool	Yetts	Upper Yetts	Golf Course Road	Rural/Other	Out with Pool
0	28.6	31.3	14.3	41.7	42.1	35.2
1	2.0	6.3	0.0	8.3	10.5	7.4
2	2.0	18.8	14.3	0.0	15.8	13.0
3	8.2	0.0	14.3	8.3	15.8	9.3
4	4.1	6.3	0.0	0.0	0.0	1.9
5	8.2	6.3	14.3	0.0	0.0	3.7
6	4.1	6.3	0.0	0.0	0.0	1.9
7	2.0	0.0	0.0	0.0	5.3	1.9
8	6.1	0.0	0.0	16.7	0.0	3.7
9	0.0	0.0	0.0	0.0	0.0	0.0
10	34.7	25.0	42.9	25.0	10.5	22.2
	100.0	100.0	100.0	100.0	100.0	100



**Total percentage disagreeing / agreeing with statement (score less than / more than 5):**

**Pool:** 44.9% (disagreeing) 46.9% (agreeing)

**Out with Pool:** 66.7% (disagreeing) 29.6% (agreeing)

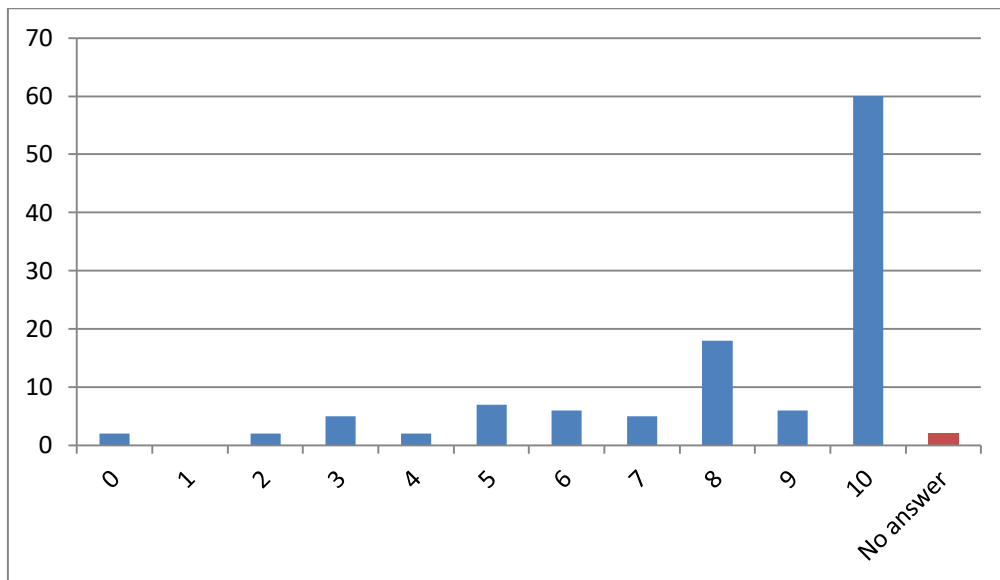
**Commentary:**

The 'split' results indicate a very slight majority within the Pool agreeing with the statement, however, the vast majority of residents out with the Pool disagree with the statement.

**Qu12**

**A safe, integrated, foot and cycle path network, extending across the wider Muckhart area, is a priority.**

Basic statistics			Distribution		
	Number	%	Value	Count	% over all
Answered	113	98.3	0	2	1.7
Not answered	2	1.7	1	0	0.0
<b>Total:</b>	115	100.0	2	2	1.7
<b>Mean:</b>	8.24		3	5	4.3
<b>Mode:</b>	10		4	2	1.7
<b>Median:</b>	10		5	7	6.1
			6	6	5.2
			7	5	4.3
			8	18	15.7
			9	6	5.2
			10	60	52.2
			No answer	2	1.7



**Commentary:**

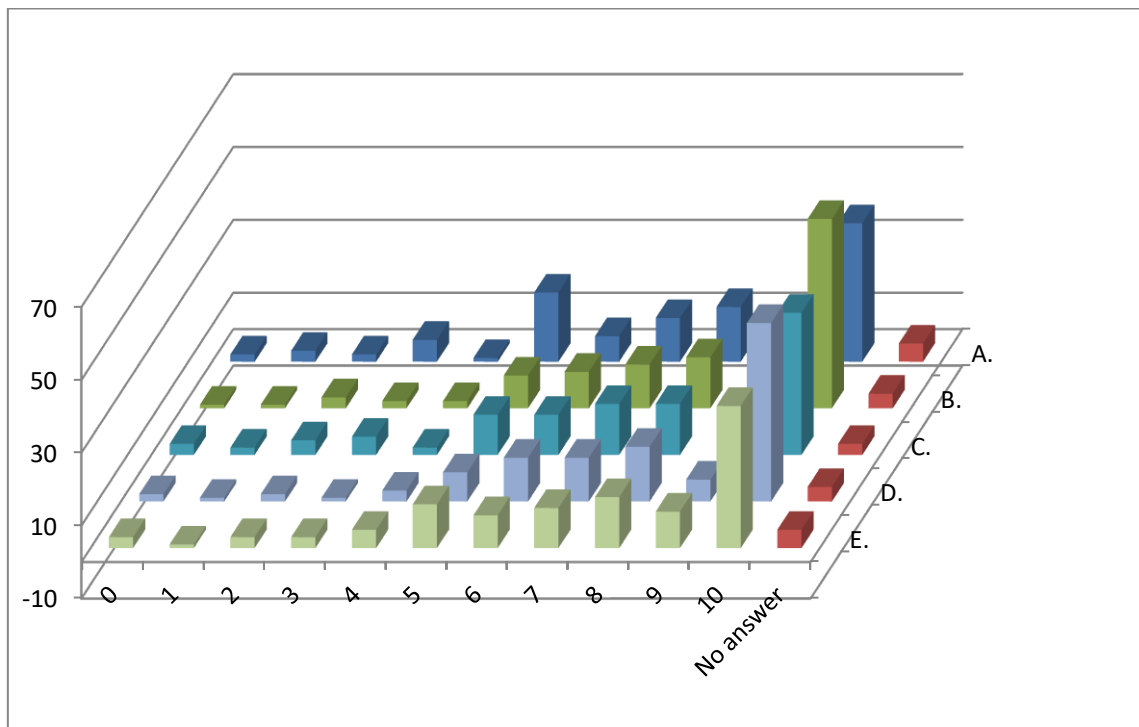
Largely positive response obtained (84.1% of scores were over 5), and by far the most frequent response being in complete agreement with the statement (score 10).



**Qu13** The development or improvement of the following foot and cycle paths / access is a priority.

- a. Coronation Hall to Muckhart Golf Club (Drumburn Rd)**
- b. Muckhart to Dollar and beyond**
- c. Muckhart to Rumbling Bridge**
- d. Muckhart (through Yetts) to Upper Yetts**
- e. Upper Yetts to Glendevon**

Value	13a		13b		13c		13d		13e	
	Count	% over all	Count	% over all	Count	% over all	Count	% over all	Count	% over all
0	2	1.7	1	0.9	3	2.6	2	1.7	3	2.6
1	3	2.6	1	0.9	2	1.7	1	0.9	1	0.9
2	2	1.7	3	2.6	4	3.5	2	1.7	3	2.6
3	6	5.2	2	1.7	5	4.3	1	0.9	3	2.6
4	1	0.9	2	1.7	2	1.7	3	2.6	5	4.3
5	19	16.5	9	7.8	11	9.6	8	7.0	12	10.4
6	7	6.1	10	8.7	11	9.6	12	10.4	9	7.8
7	12	10.4	12	10.4	14	12.2	12	10.4	11	9.6
8	15	13.0	14	12.2	14	12.2	15	13.0	14	12.2
9	5	4.3	5	4.3	7	6.1	6	5.2	10	8.7
10	38	33.0	52	45.2	39	33.9	49	42.6	39	33.9
	110	95.7	111	96.5	112	97.4	111	96.5	110	95.7



**Key**

- A** Coronation Hall to Muckhart Golf Club (Drumburn Road)
- B** Muckhart to Dollar and beyond
- C** Muckhart to Rumbling Bridge
- D** Muckhart (through Yetts) to Upper Yetts
- E** Upper Yetts to Glendevon

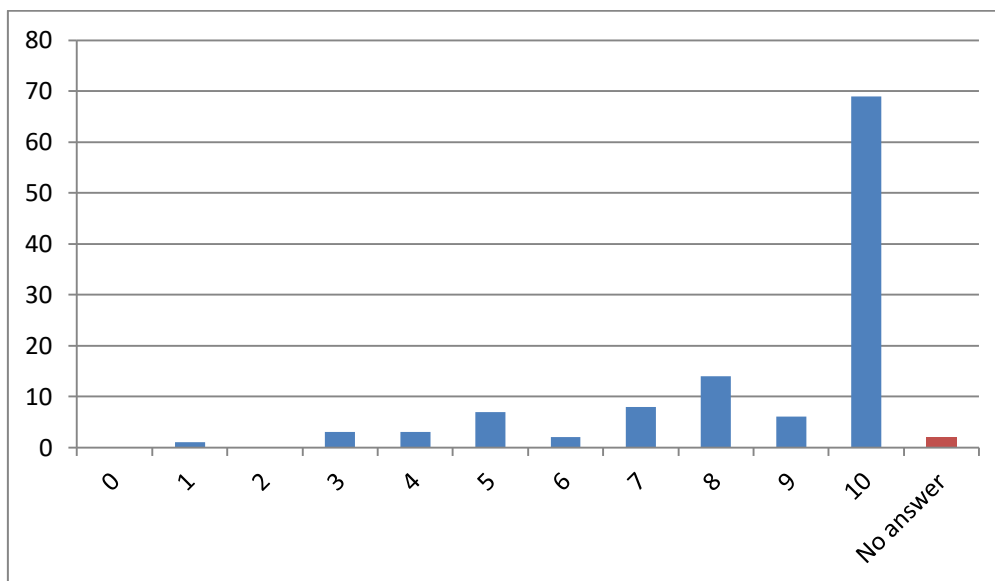
**Commentary:**

Very positive responses obtained for all potential path improvements (responses range from 67% to 81.9% over 5) with, by far, the most frequent response being in complete agreement with the statement (score 10). The 'Muckhart to Dollar and beyond' option gained the most 10s.

### 3. Sustainability & Environment

**Qu14** The impact on biodiversity and the environment should be considered in the assessment of all local planning applications.

Basic statistics			Distribution		
	Number	%	Value	Count	% over all
<b>Answered</b>	113	98.3	0	0	0.0
<b>Not answered</b>	2	1.7	1	1	0.9
<b>Total:</b>	115	100.0	2	0	0.0
<b>Mean:</b>	8.68		3	3	2.6
<b>Mode:</b>	10		4	3	2.6
<b>Median:</b>	10		5	7	6.1
			6	2	1.7
			7	8	7.0
			8	14	12.2
			9	6	5.2
			10	69	60.0
			No answer	2	1.7



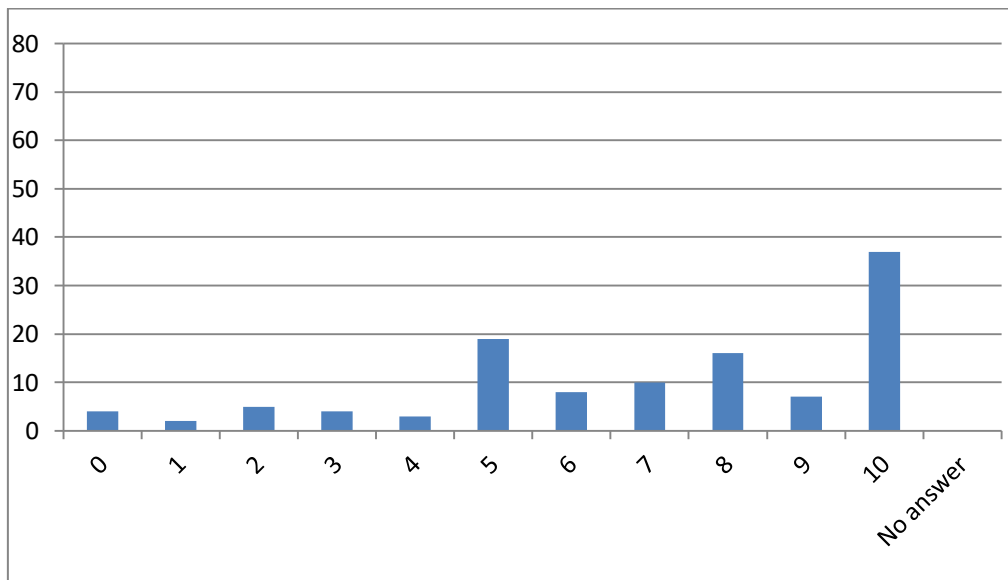
**Commentary:**

A largely unanimous positive response obtained (87.6% of scores were over 5), and, by far, the most frequent response being in complete agreement with the statement (score 10).

**Qu15**

**I would welcome an initiative to share information on sustainable energy and energy efficiency schemes, from within our community (for example: biomass, solar panels, community heating schemes, electric & hybrid cars, etc.).**

Basic statistics			Distribution		
	Number	%	Value	Count	% over all
<b>Answered</b>	115	100.0	0	4	3.5
<b>Not answered</b>	0	0.0	1	2	1.7
<b>Total:</b>	115	100.0	2	5	4.3
<b>Mean:</b>	7.04		3	4	3.5
<b>Mode:</b>	10		4	3	2.6
<b>Median:</b>	8		5	19	16.5
			6	8	7.0
			7	10	8.7
			8	16	13.9
			9	7	6.1
			10	37	32.2
			No answer	0	0.0



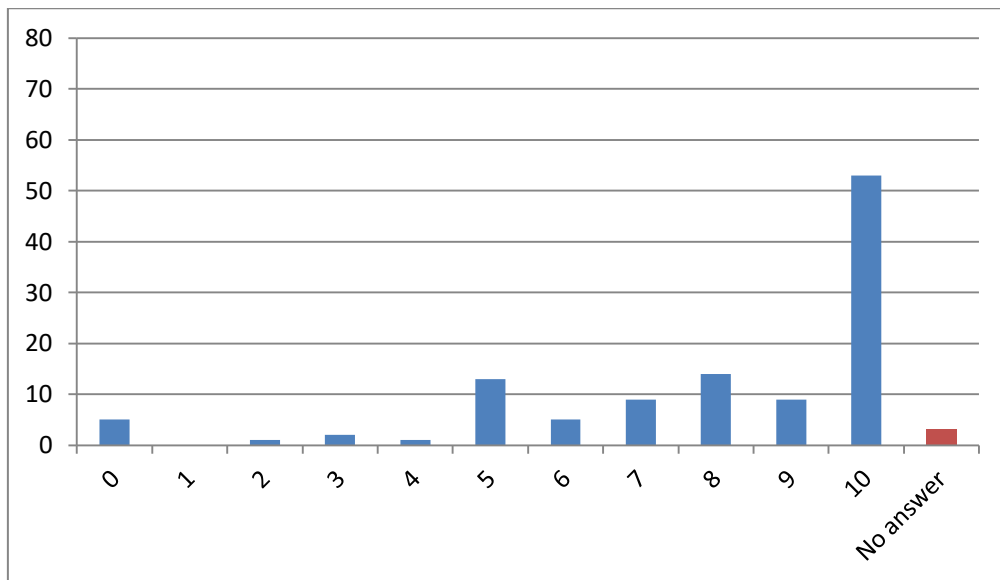
**Commentary:**

A largely positive response obtained (67.8% of scores were over 5), and the most frequent response being in complete agreement with the statement (score 10).

**Qu16**

**I support designating the area to the south of the A91, over to the River Devon, an area of Special Landscape Area (SLA)**

Basic statistics			Distribution		
	Number	%	Value	Count	% over all
Answered	112	97.4	0	5	4.3
Not answered	3	2.6	1	0	0.0
<b>Total:</b>	115	100.0	2	1	0.9
<b>Mean:</b>	7.97		3	2	1.7
<b>Mode:</b>	10		4	1	0.9
<b>Median:</b>	9		5	13	11.3
			6	5	4.3
			7	9	7.8
			8	14	12.2
			9	9	7.8
			10	53	46.1
			No answer	3	2.6



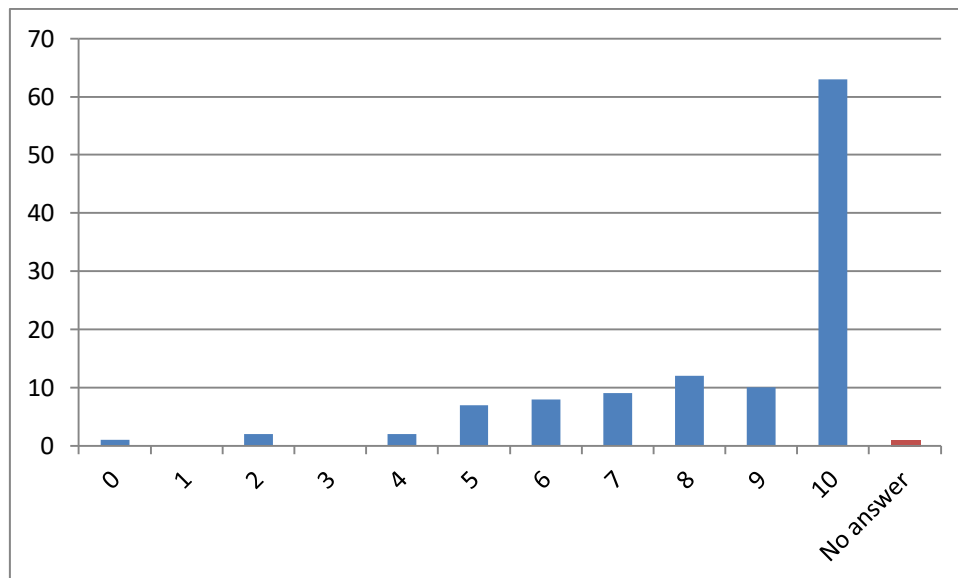
**Commentary:**

A largely positive response obtained (80.4% of scores were over 5), and, by far, the most frequent response being in complete agreement with the statement (score 10).

## 4. Active Community

**Qu17** I support a single, integrated, web-based source of information for Muckhart which includes: a diary of community events; information on organisations, and their contacts, within our community; a community newsletter; etc.

Basic statistics			Distribution		
	Number	%	Value	Count	% over all
<b>Answered</b>	114	99.1	0	1	0.9
<b>Not answered</b>	1	0.9	1	0	0.0
<b>Total:</b>	115	100.0	2	2	1.7
<b>Mean:</b>	8.54		3	0	0.0
<b>Mode:</b>	10		4	2	1.7
<b>Median:</b>	10		5	7	6.1
			6	8	7.0
			7	9	7.8
			8	12	10.4
			9	10	8.7
			10	63	54.8
			No answer	1	0.9

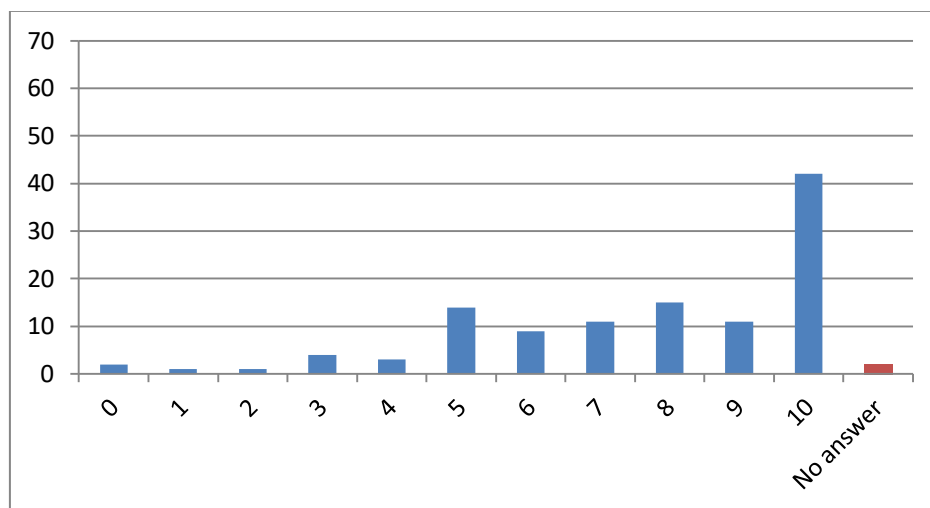


### Commentary:

Nearly unanimous positive response obtained (89.5% of scores were over 5), and, by far, the most frequent response being in complete agreement with the statement (score 10).

**Qu18** I support the development of a list of volunteers, together with the skills that they offer, which would be accessed through the community website.

Basic statistics			Distribution		
	Number	%	Value	Count	% over all
<b>Answered</b>	113	98.3	0	2	1.7
<b>Not answered</b>	2	1.7	1	1	0.9
<b>Total:</b>	115	100.0	2	1	0.9
<b>Mean:</b>	7.67		3	4	3.5
<b>Mode:</b>	10		4	3	2.6
<b>Median:</b>	8		5	14	12.2
			6	9	7.8
			7	11	9.6
			8	15	13.0
			9	11	9.6
			10	42	36.5
			No answer	2	1.7

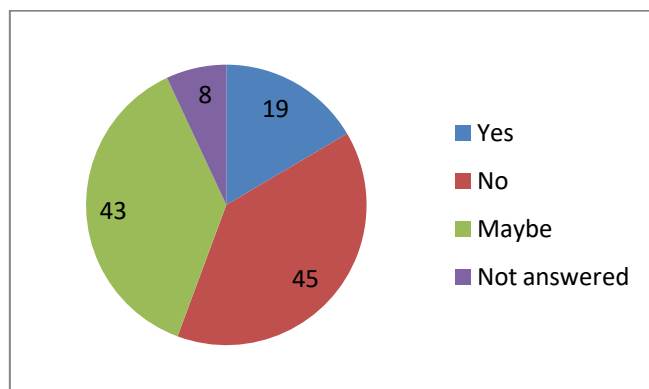


**Commentary:**

Largely positive response obtained (77.9% of scores were over 5), and the most frequent response being in complete agreement with the statement (score 10).

**Willing to be involved?**

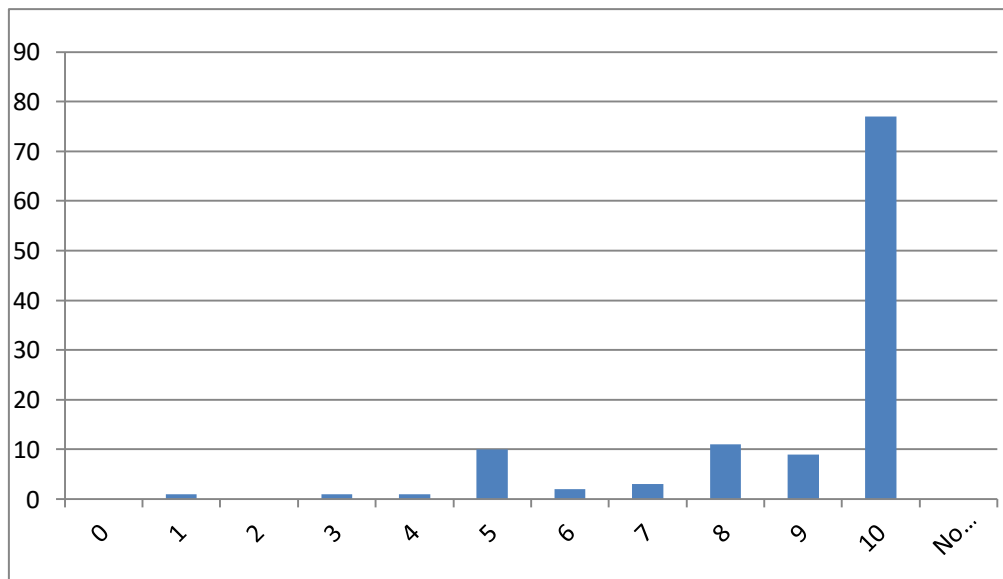
	Number	%
<b>Yes</b>	19	16.5
<b>No</b>	45	39.1
<b>Maybe</b>	43	37.4
<b>Not answered</b>	8	7.0
<b>Total:</b>	115	100.0



## 5. Education

**Qu20** Muckhart Primary School is a vital community asset which must be retained within the village.

Basic statistics			Distribution		
	Number	%	Value	Count	% over all
<b>Answered</b>	115	100.0	0	0	0.0
<b>Not answered</b>	0	0.0	1	1	0.9
<b>Total:</b>	115	100.0	2	0	0.0
<b>Mean:</b>	8.96		3	1	0.9
<b>Mode:</b>	10		4	1	0.9
<b>Median:</b>	10		5	10	8.7
			6	2	1.7
			7	3	2.6
			8	11	9.6
			9	9	7.8
			10	77	67.0
			No answer	0	0.0



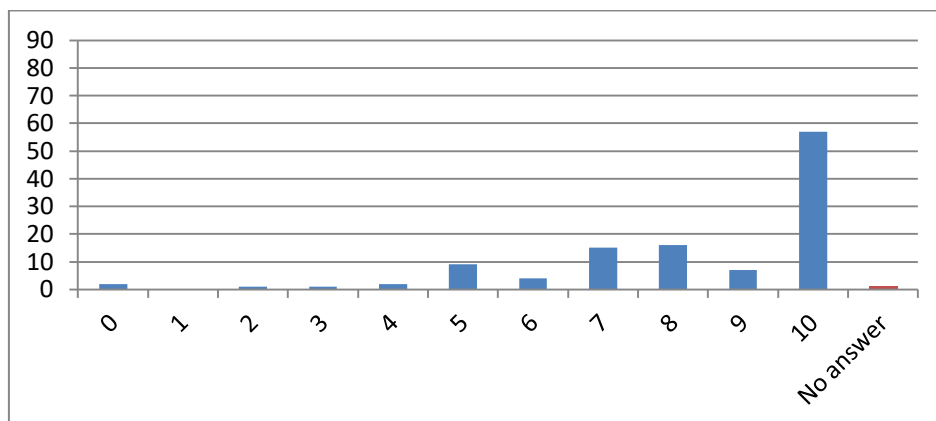
### Commentary:

Nearly unanimous positive response obtained (88.7% of scores were over 5), and, by far, the most frequent response being in complete agreement with the statement (score 10).



**Qu21** Everything possible should be done to integrate Muckhart Primary School even further within our community, including, for example:, community support for 'after school clubs', increased levels of volunteering at the school, use of the school as a community learning resource, out-with school hours

Basic statistics			Distribution		
	Number	%	Value	Count	% over all
<b>Answered</b>	114	99.1	0	2	1.7
<b>Not answered</b>	1	0.9	1	0	0.0
<b>Total:</b>	115	100.0	2	1	0.9
<b>Mean:</b>	8.32		3	1	0.9
<b>Mode:</b>	10		4	2	1.7
<b>Median:</b>	10		5	9	7.8
			6	4	3.5
			7	15	13.0
			8	16	13.9
			9	7	6.1
			10	57	49.6
			No answer	1	0.9

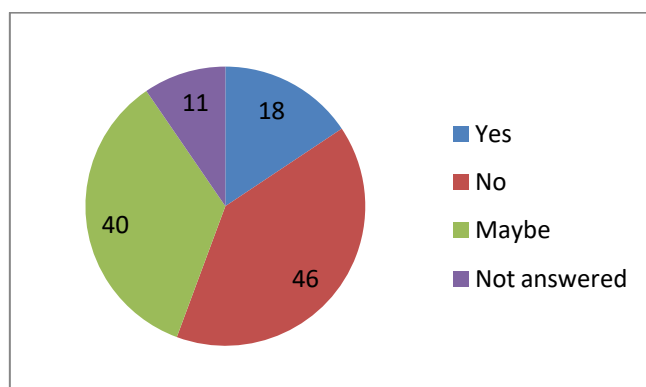


**Commentary:**

Nearly unanimous positive response obtained (86.8% of scores were over 5), and the most frequent response being in complete agreement with the statement (score 10).

**Willing to be involved?**

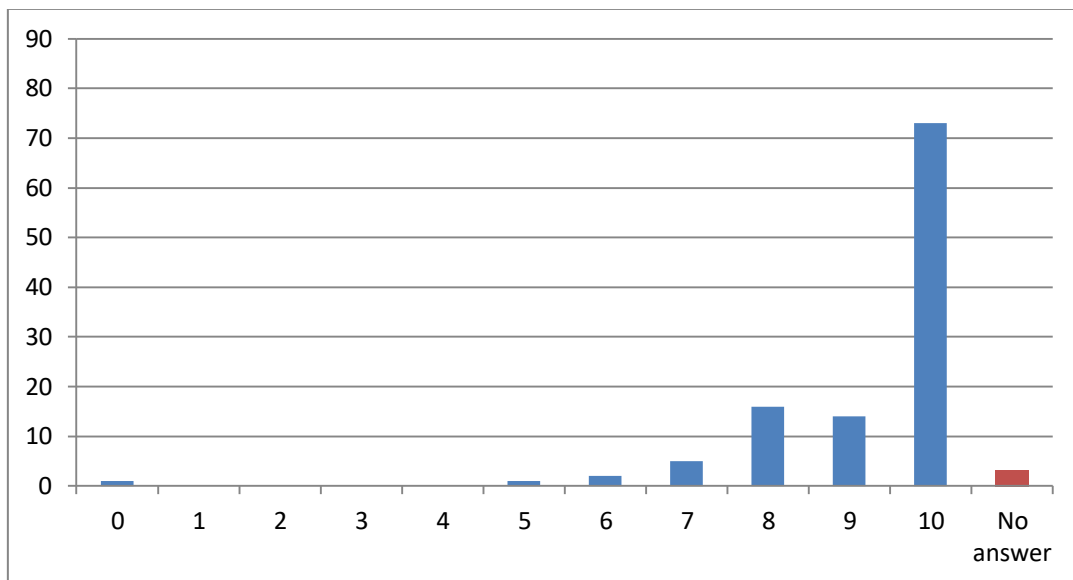
	Number	%
<b>Yes</b>	18	15.7
<b>No</b>	46	40.0
<b>Maybe</b>	40	34.8
<b>Not answered</b>	11	9.6
<b>Total:</b>	115	100.0



**Qu23**

**Suitable arrangements must be provided within the village to enable children to walk and cycle, safely, to and from school.**

Basic statistics			Distribution		
	Number	%	Value	Count	% over all
Answered	112	97.4	0	1	0.9
Not answered	3	2.6	1	0	0.0
<b>Total:</b>	115	100.0	2	0	0.0
<b>Mean:</b>	9.25		3	0	0.0
<b>Mode:</b>	10		4	0	0.0
<b>Median:</b>	10		5	1	0.9
			6	2	1.7
			7	5	4.3
			8	16	13.9
			9	14	12.2
			10	73	63.5
			No answer	3	2.6



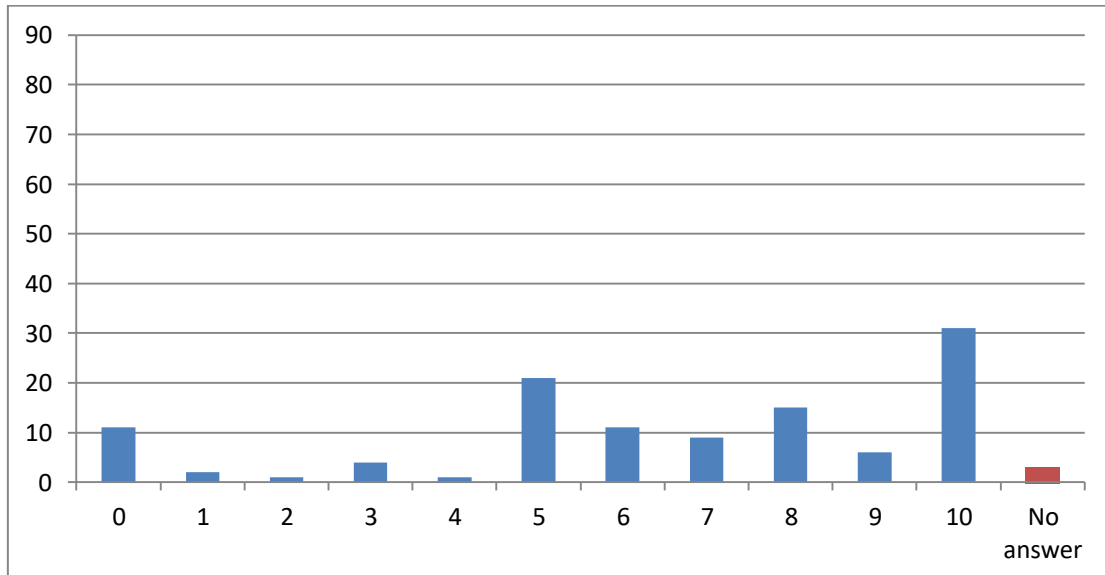
**Commentary:**

Nearly unanimous positive response obtained (98.2% of scores were over 5), and, by far, the most frequent response being in complete agreement with the statement (score 10).

Qu24

Additional car parking at the Primary School is a priority.

Basic statistics			Distribution		
	Number	%	Value	Count	% over all
Answered	112	97.4	0	11	9.6
Not answered	3	2.6	1	2	1.7
<b>Total:</b>	115	100.0	2	1	0.9
<b>Mean:</b>	6.59		3	4	3.5
<b>Mode:</b>	10		4	1	0.9
<b>Median:</b>	7		5	21	18.3
			6	11	9.6
			7	9	7.8
			8	15	13.0
			9	6	5.2
			10	31	27.0
			No answer	3	2.6

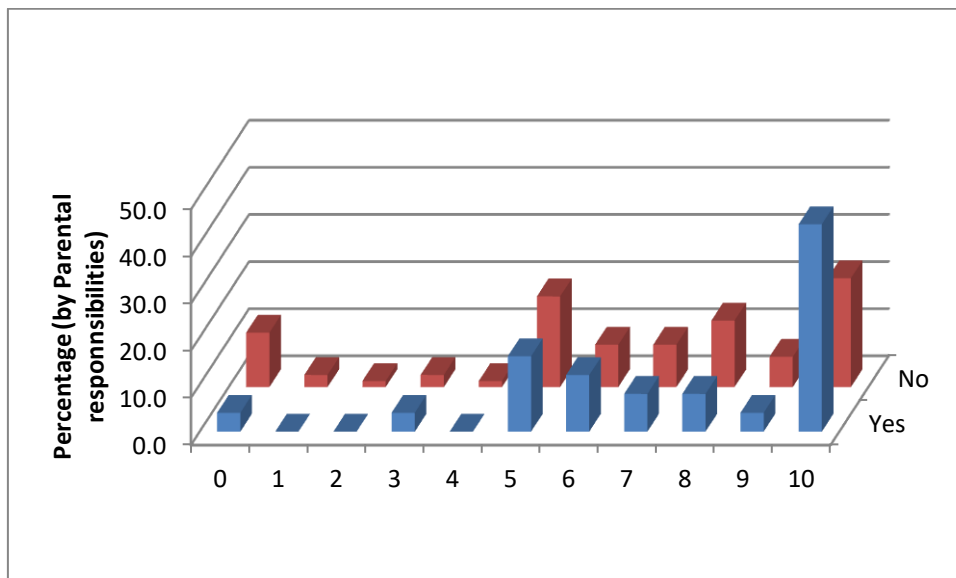


**Commentary:**

A positive response obtained (64.3% of scores were over 5), and, by far, the most frequent response being in complete agreement with the statement (score 10).

**By percentage (per responsibility group i.e. column percentages)**

	<b>Yes</b>	<b>No</b>
0	4.0	11.5
1	0.0	2.6
2	0.0	1.3
3	4.0	2.6
4	0.0	1.3
5	16.0	19.2
6	12.0	9.0
7	8.0	9.0
8	8.0	14.1
9	4.0	6.4
10	44.0	23.1
	100.0	100.0



**Total percentage disagreeing / agreeing with statement (score less than / more than 5):**

**Those with responsibility for children:** 8.0% 76.0%

**Those without responsibility for children:** 19.2% 61.5%

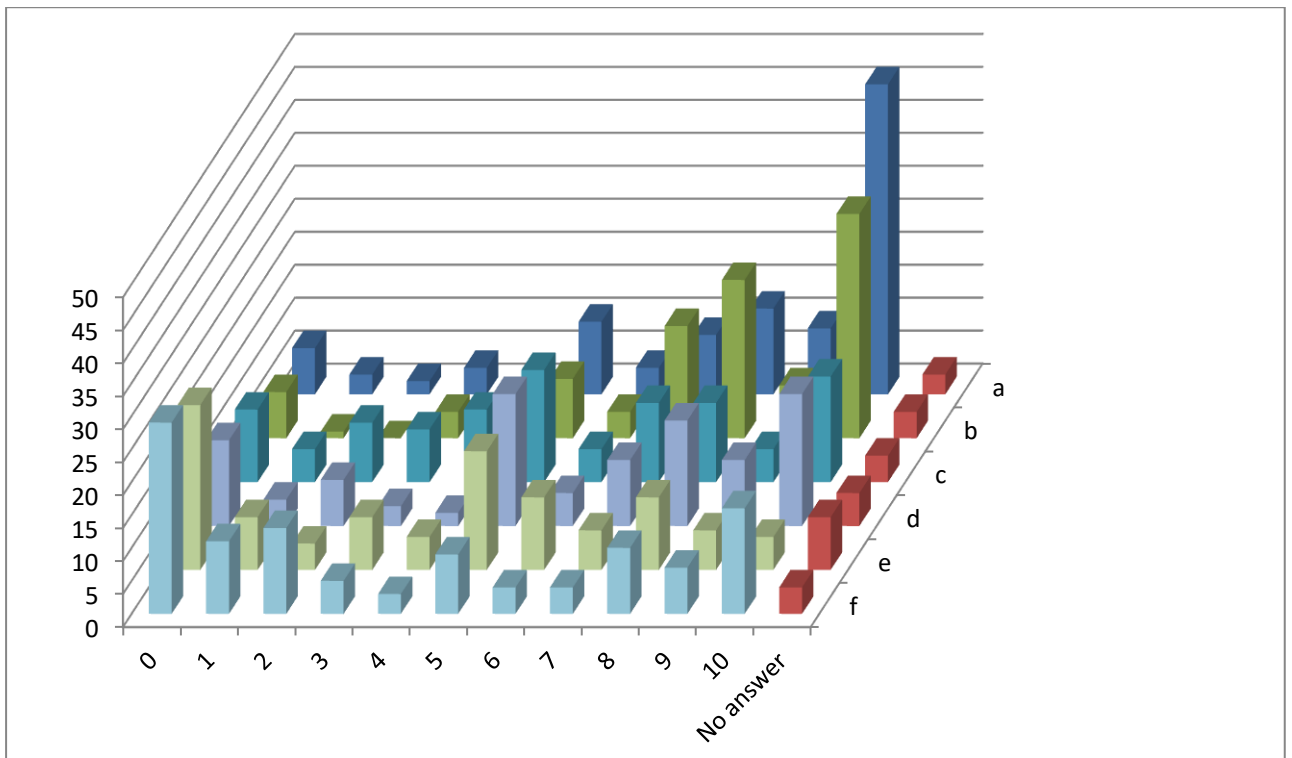
**Commentary:**

The results indicate a larger majority of agreement amongst those with responsibility for children.

## 6. Housing

**Qu25** Any housing development should include:

Value	a. Affordable, starter homes for young families		b. Homes suitable for people wishing to downsize		c. Housing for young single people		d. Sheltered housing		e. Executive housing		f. Rented housing (by local authority or housing association)	
	25a Count a	% over all	25b Count b	% over all	25c Count c	% over all	25d Count d	% over all	25e Count e	% over all	25f Count f	% over all
0	7	6.1	7	6.1	11	9.6	13	11.3	25	21.7	29	25.2
1	3	2.6	1	0.9	5	4.3	4	3.5	8	7.0	11	9.6
2	2	1.7	0	0.0	9	7.8	7	6.1	4	3.5	13	11.3
3	4	3.5	4	3.5	8	7.0	3	2.6	8	7.0	5	4.3
4	2	1.7	3	2.6	11	9.6	2	1.7	5	4.3	3	2.6
5	11	9.6	9	7.8	17	14.8	20	17.4	18	15.7	9	7.8
6	4	3.5	4	3.5	5	4.3	5	4.3	11	9.6	4	3.5
7	9	7.8	17	14.8	12	10.4	10	8.7	6	5.2	4	3.5
8	13	11.3	24	20.9	12	10.4	16	13.9	11	9.6	10	8.7
9	10	8.7	8	7.0	5	4.3	10	8.7	6	5.2	7	6.1
10	47	40.9	34	29.6	16	13.9	20	17.4	5	4.3	16	13.9
	112	97.4	111	96.5	111	96.5	110	95.7	107	93.0	111	96.5



**Key**

- a** Affordable, starter homes  
Homes suitable for people wishing to
- b** downsize
- c** Housing for young single people
- d** Sheltered housing
- e** Executive housing
- f** Rented housing

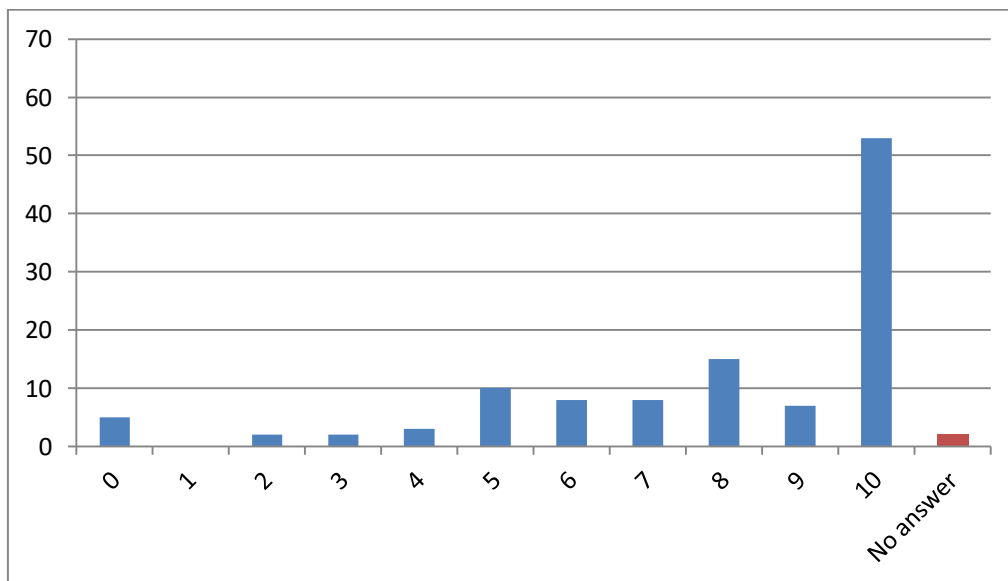
**Commentary:**

Mixed responses obtained for all potential housing development types (responses range from 75.7% and 72.2% supporting 'Homes suitable for downsizing' and 'Affordable starter homes for young families' respectively (over 5) with 53.0% and 43.5% disagreed with the provision of 'Rented Housing' and 'Executive Housing' respectively (under 5)). The 'Affordable starter homes for young families' option gained the most 10s.

**Qu26**

The developer should be required to reconstitute the 'Pool' forming a natural feature to encourage wildlife, together with associated landscaping and foot and cycle paths.

Basic statistics			Distribution		
	Number	%	Value	Count	% over all
Answered	113	98.3	0	5	4.3
Not answered	2	1.7	1	0	0.0
Total:	115	100.0	2	2	1.7
Mean:	7.87		3	2	1.7
Mode:	10		4	3	2.6
Median:	9		5	10	8.7
			6	8	7.0
			7	8	7.0
			8	15	13.0
			9	7	6.1
			10	53	46.1
			No answer	2	1.7



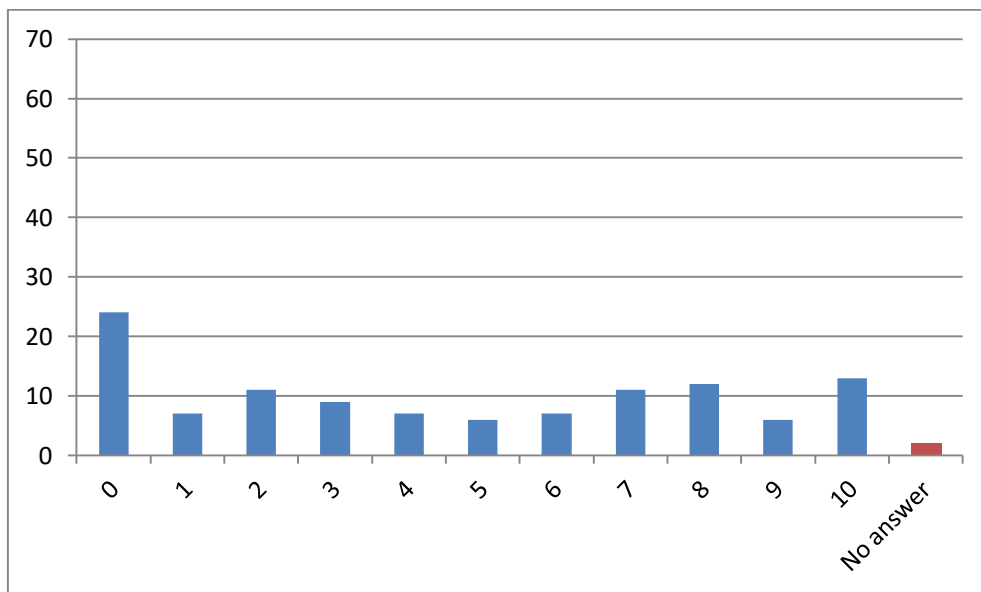
**Commentary:**

A nearly unanimous response obtained (80.5% of scores were over 5), and, by far, the most frequent response being in complete agreement with the statement (score 10).

**Qu27**

**Small, sympathetic business units should be built within Muckhart, to support local small enterprise 'start up' companies, as part of any housing development plan.**

Basic statistics			Distribution		
	Number	%	Value	Count	% over all
Answered	113	98.3	0	24	20.9
Not answered	2	1.7	1	7	6.1
<b>Total:</b>	115	100.0	2	11	9.6
<b>Mean:</b>	4.54		3	9	7.8
<b>Mode:</b>	0		4	7	6.1
<b>Median:</b>	4		5	6	5.2
			6	7	6.1
			7	11	9.6
			8	12	10.4
			9	6	5.2
			10	13	11.3
			No answer	2	1.7



**Commentary:**

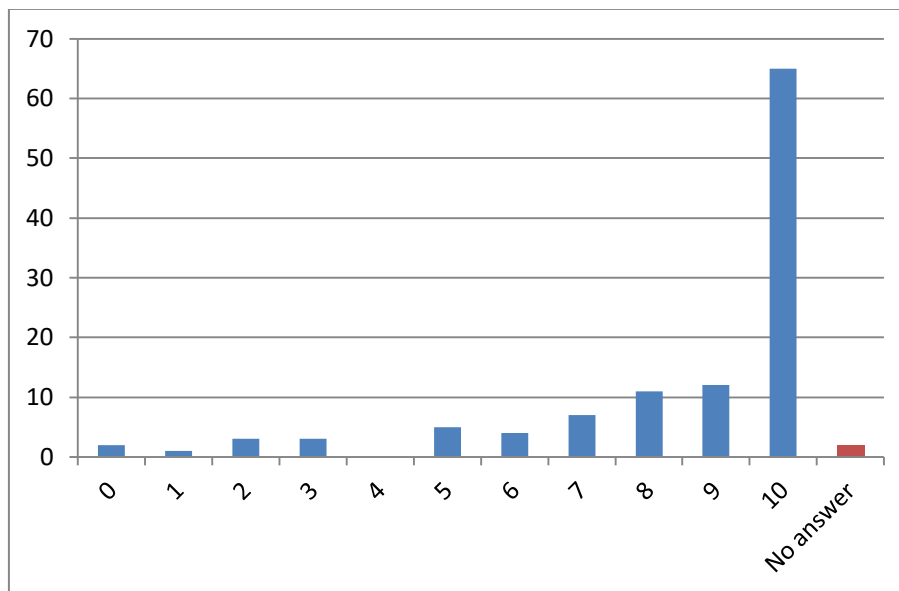
A 'split' decision with more respondents disagreeing with the statement (51.3% of scores under 5 and 43.4% of scores were over 5) with the most frequent response being totally disagree with the statement (score 0).



**Qu28**

**Future housing stock in Muckhart should only be allowed to grow gradually and incrementally.**

Basic statistics			Distribution		
	Number	%	Value	Count	% over all
Answered	113	98.3	0	2	1.7
Not answered	2	1.7	1	1	0.9
<b>Total:</b>	115	100.0	2	3	2.6
<b>Mean:</b>	8.50		3	3	2.6
<b>Mode:</b>	10		4	0	0.0
<b>Median:</b>	10		5	5	4.3
			6	4	3.5
			7	7	6.1
			8	11	9.6
			9	12	10.4
			10	65	56.5
			No answer	2	1.7



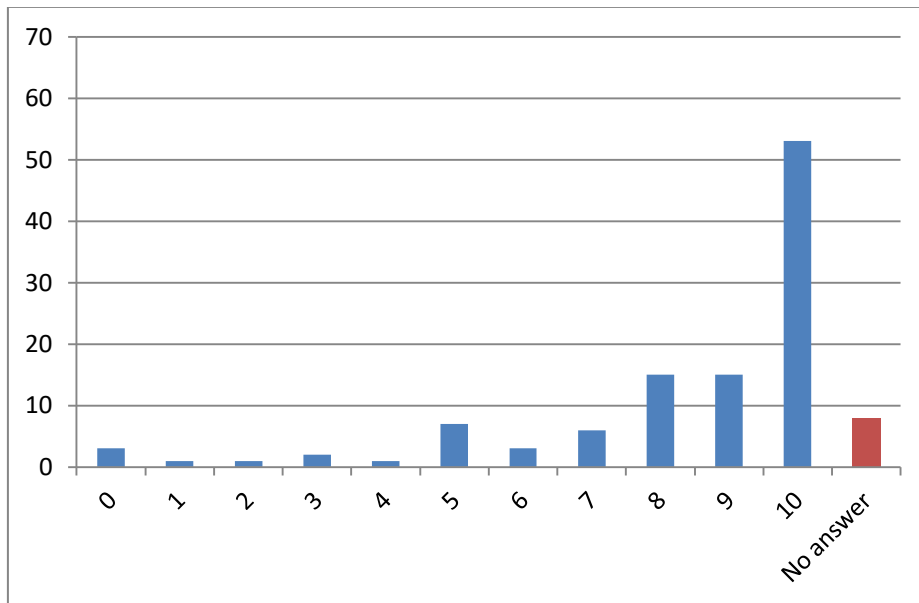
**Commentary:**

Largely unanimous positive response obtained (87.6% of scores were over 5), and, by far, the most frequent response being in complete agreement with the statement (score 10).

**Qu29**

**All 'Planning Gain' funds should be deposited into a Muckhart Community Development Fund**

Basic statistics			Distribution		
	Number	%	Value	Count	% over all
Answered	107	93.0	0	3	2.6
Not answered	8	7.0	1	1	0.9
<b>Total:</b>	115	100.0	2	1	0.9
<b>Mean:</b>	8.35		3	2	1.7
<b>Mode:</b>	10		4	1	0.9
<b>Median:</b>	9		5	7	6.1
			6	3	2.6
			7	6	5.2
			8	15	13.0
			9	15	13.0
			10	53	46.1
			No answer	8	7.0



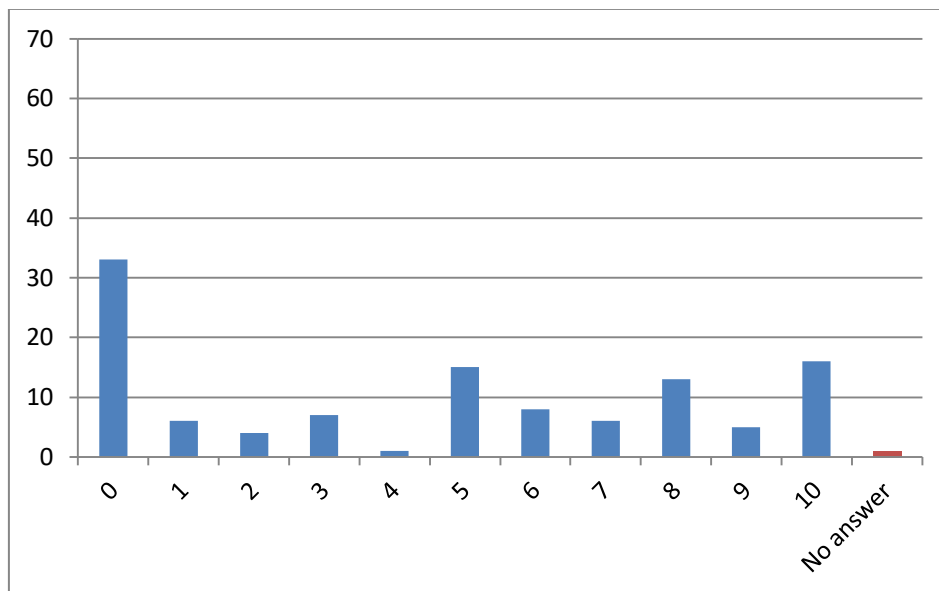
**Commentary:**

Largely unanimous positive response obtained (86.0% of scores were over 5), and, by far, the most frequent response being in complete agreement with the statement (score 10).

**Qu30**

**I would support the limited, incremental, development of housing in the Muckhart area, out-with the Pool of Muckhart settlement boundary**

Basic statistics			Distribution		
	Number	%	Value	Count	% over all
Answered	114	99.1	0	33	28.7
Not answered	1	0.9	1	6	5.2
<b>Total:</b>	115	100.0	2	4	3.5
<b>Mean:</b>	4.50		3	7	6.1
<b>Mode:</b>	0		4	1	0.9
<b>Median:</b>	5		5	15	13.0
			6	8	7.0
			7	6	5.2
			8	13	11.3
			9	5	4.3
			10	16	13.9
			No answer	1	0.9

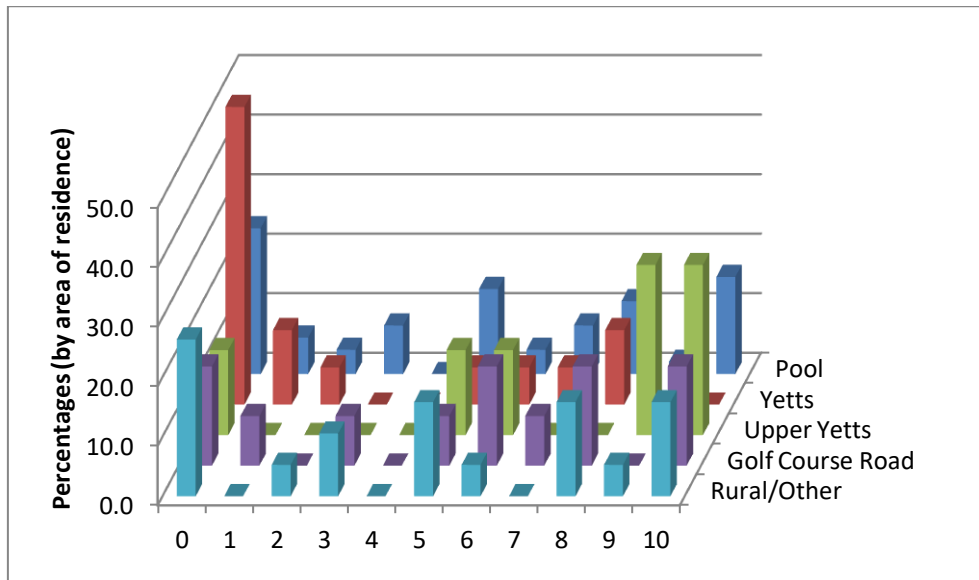


**Commentary:**

This question overall received a negative response (57.9% of scores were 5 or less) again with the most frequent response being totally disagree with the statement (score 0).

By percentage (per residence group i.e. column percentages)

	Pool	Yetts	Upper Yetts	Golf Course Road	Rural/Other
0	24.5	50.0	14.3	16.7	26.3
1	6.1	12.5	0.0	8.3	0.0
2	4.1	6.3	0.0	0.0	5.3
3	8.2	0.0	0.0	8.3	10.5
4	0.0	0.0	0.0	0.0	0.0
5	14.3	6.3	14.3	8.3	15.8
6	4.1	6.3	14.3	16.7	5.3
7	8.2	6.3	0.0	8.3	0.0
8	12.2	12.5	0.0	16.7	15.8
9	2.0	0.0	28.6	0.0	5.3
10	16.3	0.0	28.6	16.7	15.8
	100.0	100.0	100.0	100.0	100.0



Total percentage disagreeing / agreeing with statement (score less than / more than 5):

Pool:	42.9%	42.9%
Yetts:	68.8%	25.0%
Upper Yetts:	14.3%	71.4%
Golf Course Road:	33.3%	58.3%
Rural / Other:	42.1%	42.1%

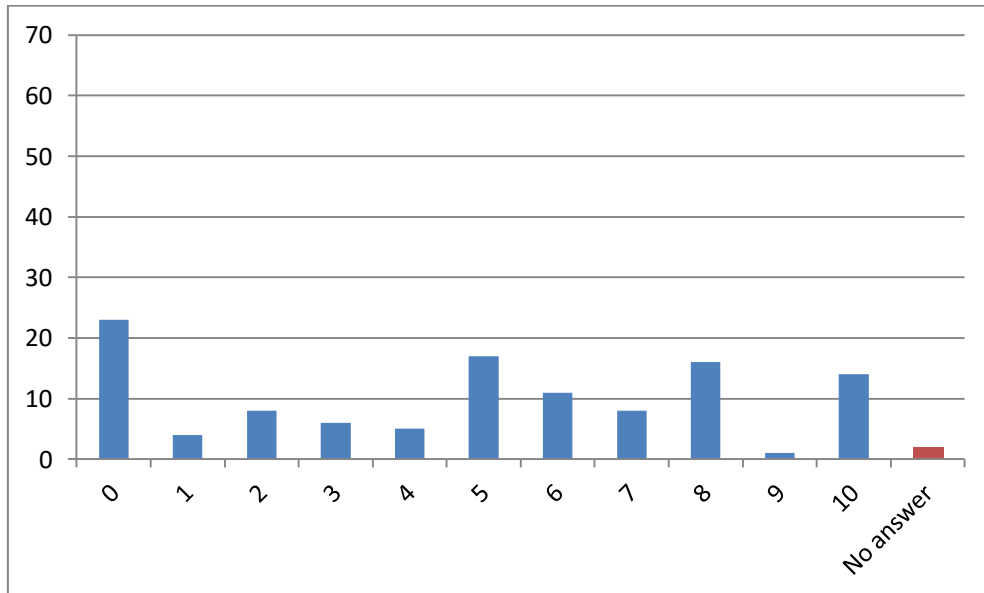
**Commentary:**

Those residing in Yetts strongly disagree with the statement, however, those residing in Upper Yetts strongly agree with it.

**Qu31**

**I would support such housing but only where clusters of houses already exist.**

Basic statistics			Distribution		
	Number	%	Value	Count	% over all
Answered	113	98.3	0	23	20.0
Not answered	2	1.7	1	4	3.5
<b>Total:</b>	115	100.0	2	8	7.0
<b>Mean:</b>	4.80		3	6	5.2
<b>Mode:</b>	0		4	5	4.3
<b>Median:</b>	5		5	17	14.8
			6	11	9.6
			7	8	7.0
			8	16	13.9
			9	1	0.9
			10	14	12.2
			No answer	2	1.7

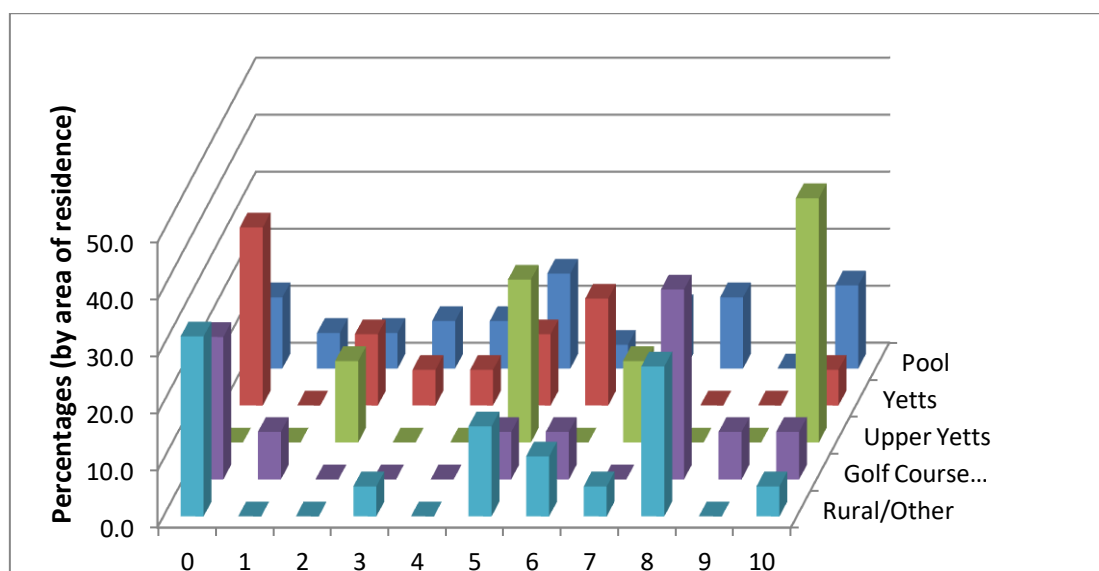


**Commentary:**

Again, this question received a negative response (55.8% of scores were 5 or less) with the most frequent response being totally disagree with the statement (score 0).

By percentage (per residence group i.e. column percentages)

	Pool	Yetts	Upper Yetts	Golf Course Road	Rural/Other
0	12.5	31.3	0.0	25.0	31.6
1	6.3	0.0	0.0	8.3	0.0
2	6.3	12.5	14.3	0.0	0.0
3	8.3	6.3	0.0	0.0	5.3
4	8.3	6.3	0.0	0.0	0.0
5	16.7	12.5	28.6	8.3	15.8
6	4.2	18.8	0.0	8.3	10.5
7	10.4	6.3	14.3	0.0	5.3
8	12.5	0.0	0.0	33.3	26.3
9	0.0	0.0	0.0	8.3	0.0
10	14.6	6.3	42.9	8.3	5.3
	100.0	100.0	100.0	100.0	100.0



**Total percentage disagreeing / agreeing with statement (score less than / more than 5):**

<b>Pool:</b>	<b>41.7%</b>	<b>41.7%</b>
<b>Yetts:</b>	<b>56.3%</b>	<b>31.3%</b>
<b>Upper Yetts:</b>	<b>14.3%</b>	<b>57.1%</b>
<b>Golf Course Road:</b>	<b>33.3%</b>	<b>58.3%</b>
<b>Rural / Other:</b>	<b>36.8%</b>	<b>47.4%</b>

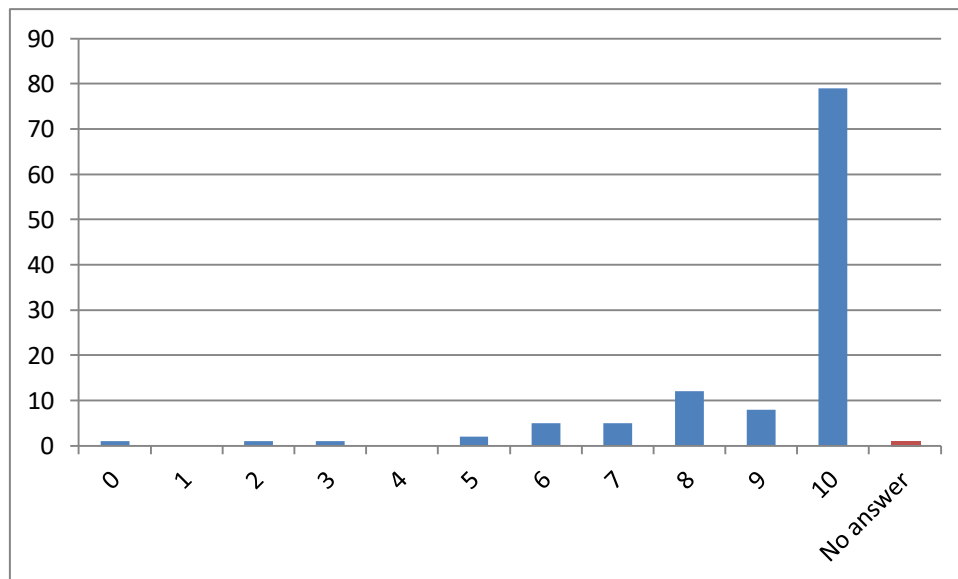
**Commentary:**

Generally, there is slightly more agreement with this statement. However, those residing in Yetts still fairly strongly disagree, whilst those residing in Golf Course Road, as well as those in Upper Yetts, more strongly agree with the statement.

## 7. Business Development

**Qu32** A more effective, widely available, 'superfast' broadband service is critical for all businesses and residents throughout the Muckhart community.

Basic statistics			Distribution			
	Number	%	Value	Count	% over all	
Answered	114	99.1	0	1	0.9	
Not answered	1	0.9	1	0	0.0	
<b>Total:</b>	115	100.0	2	1	0.9	
<b>Mean:</b>	9.11		3	1	0.9	
<b>Mode:</b>	10		4	0	0.0	
<b>Median:</b>	10		5	2	1.7	
			6	5	4.3	
			7	5	4.3	
			8	12	10.4	
			9	8	7.0	
			10	79	68.7	
			No answer	1	0.9	



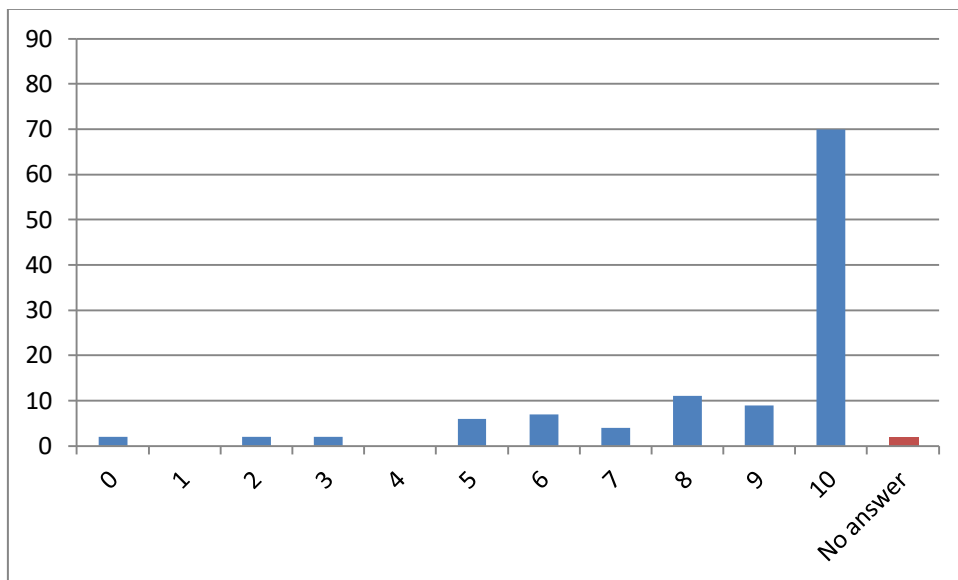
### Commentary:

Almost unanimous positive response obtained (95.6% of scores were over 5), and, by far, the most frequent response being in complete agreement with the statement (score 10).

**Qu33**

**A more effective and reliable mobile/cellular service is critical for all businesses and residents throughout the Muckhart community.**

Basic statistics			Distribution		
	Number	%	Value	Count	% over all
Answered	113	98.3	0	2	1.7
Not answered	2	1.7	1	0	0.0
<b>Total:</b>	115	100.0	2	2	1.7
<b>Mean:</b>	8.66		3	2	1.7
<b>Mode:</b>	10		4	0	0.0
<b>Median:</b>	10		5	6	5.2
			6	7	6.1
			7	4	3.5
			8	11	9.6
			9	9	7.8
			10	70	60.9
			No answer	2	1.7



**Commentary:**

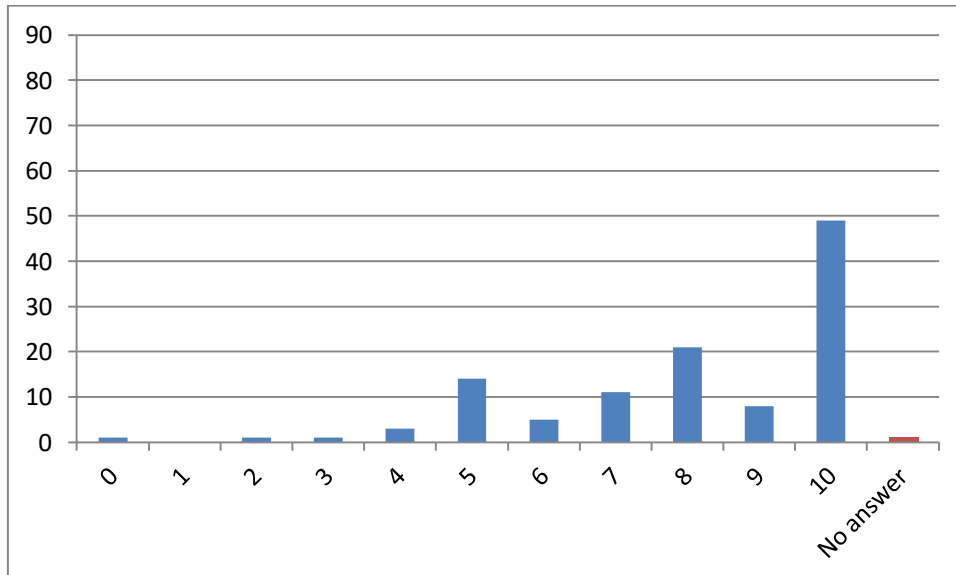
Largely unanimous positive response obtained (89.4% of scores were over 5), and, by far, the most frequent response being in complete agreement with the statement (score 10).



**Qu34**

**I support the growth of sustainable tourism within our area.**

Basic statistics			Distribution		
	Number	%	Value	Count	% over all
Answered	114	99.1	0	1	0.9
Not answered	1	0.9	1	0	0.0
<b>Total:</b>	115	100.0	2	1	0.9
<b>Mean:</b>	8.11		3	1	0.9
<b>Mode:</b>	10		4	3	2.6
<b>Median:</b>	9		5	14	12.2
			6	5	4.3
			7	11	9.6
			8	21	18.3
			9	8	7.0
			10	49	42.6
			No answer	1	0.9



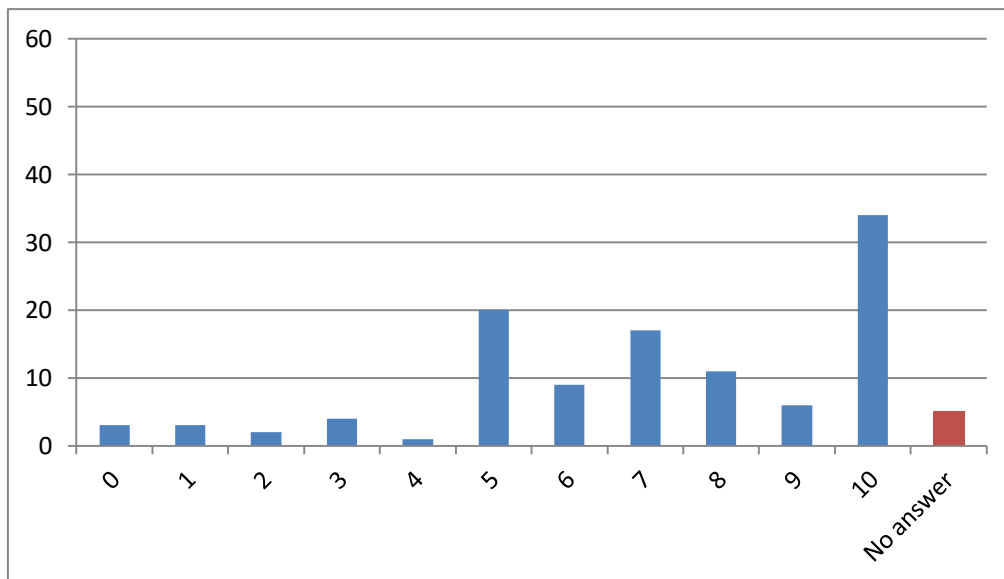
**Commentary:**

Largely unanimous positive response obtained (82.5% of scores were over 5), and, by far, the most frequent response being in complete agreement with the statement (score 10).

## 8. Public Services

**Qu35** Improved public transport on a Sunday is required to serve the Muckhart community

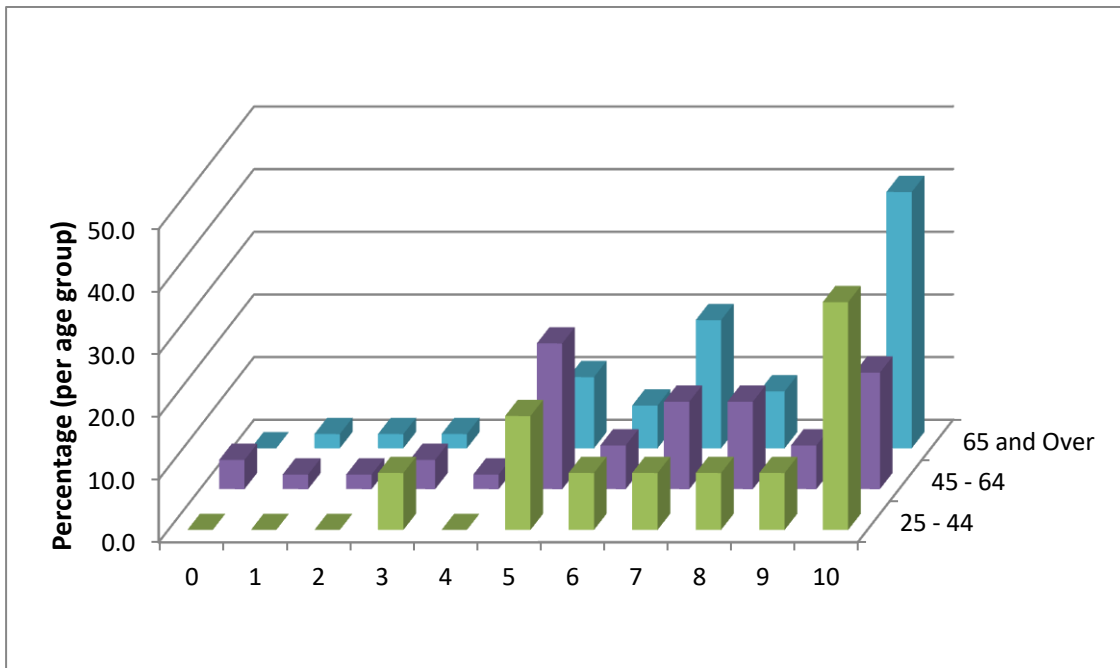
Basic statistics			Distribution			
	Number	%	Value	Count	% over all	
Answered	110	95.7	0	3	2.6	
Not answered	5	4.3	1	3	2.6	
<b>Total:</b>	115	100.0	2	2	1.7	
<b>Mean:</b>	7.07		3	4	3.5	
<b>Mode:</b>	10		4	1	0.9	
<b>Median:</b>	7		5	20	17.4	
			6	9	7.8	
			7	17	14.8	
			8	11	9.6	
			9	6	5.2	
			10	34	29.6	
			No answer	5	4.3	



### Commentary:

Largely positive response obtained (70.0% of scores were over 5), and, by far, the most frequent response being in complete agreement with the statement (score 10).

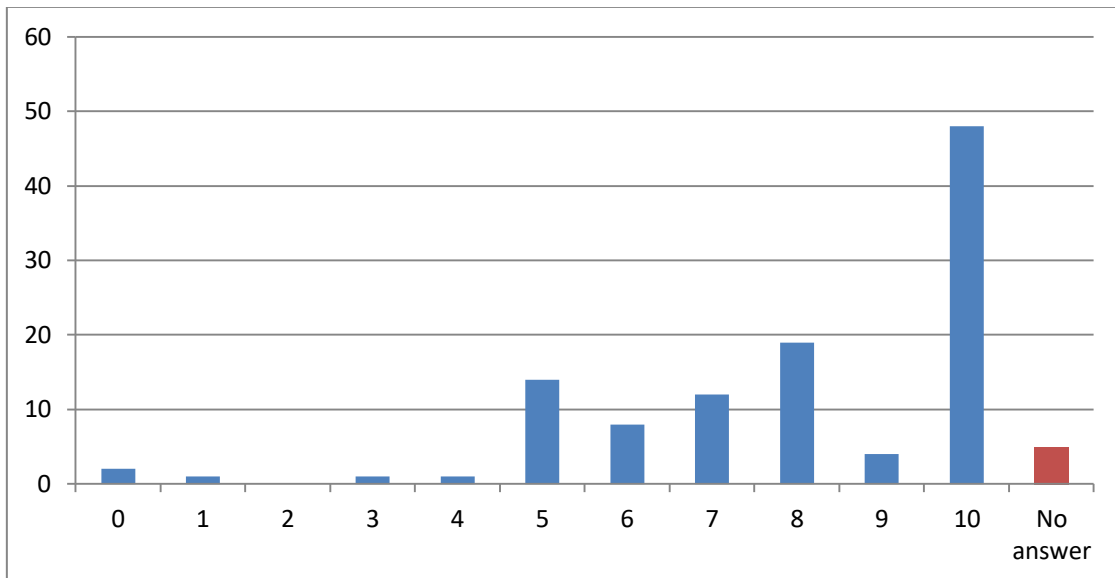
**Possible further analysis:** strong support across all age groups (see table below)



**Qu36**

**Improved public transport is required to take members of the Muckhart community to Forth Valley Hospital.**

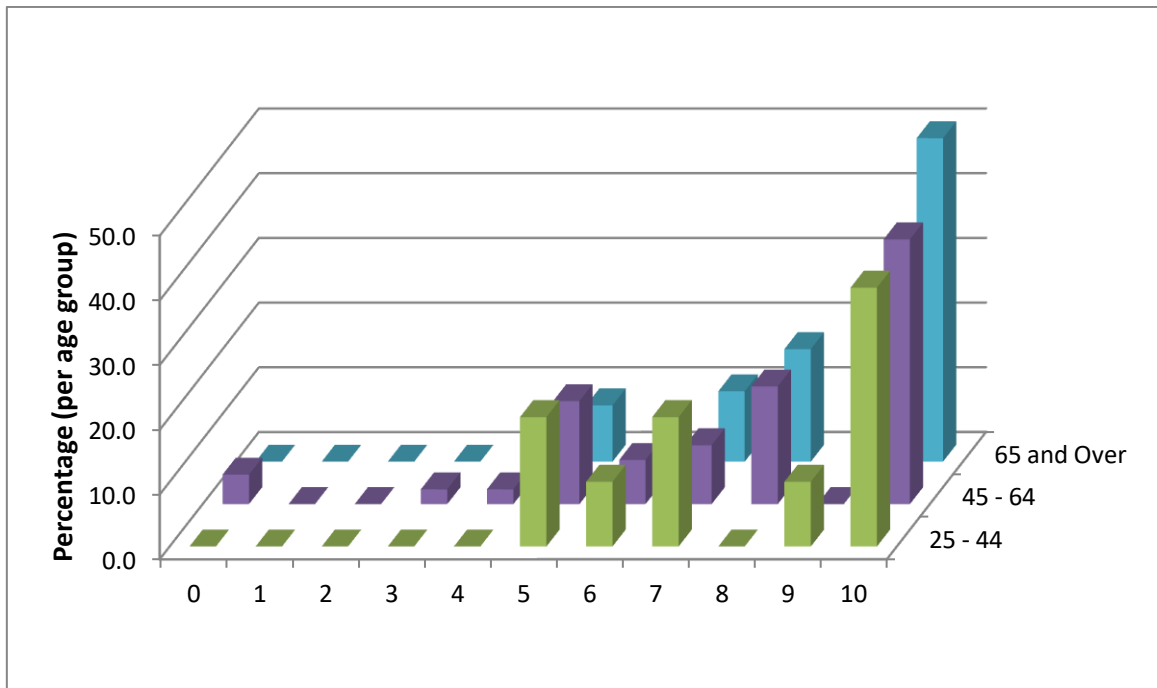
Basic statistics			Distribution		
	Number	%	Value	Count	% over all
Answered	110	95.7	0	2	1.7
Not answered	5	4.3	1	1	0.9
Total:	115	100.0	2	0	0.0
Mean:	7.98		3	1	0.9
Mode:	10		4	1	0.9
Median:	8		5	14	12.2
			6	8	7.0
			7	12	10.4
			8	19	16.5
			9	4	3.5
			10	48	41.7
			No answer	5	4.3



**Commentary:**

Largely positive response obtained (82.7% of scores were over 5), and, by far, the most frequent response being in complete agreement with the statement (score 10).

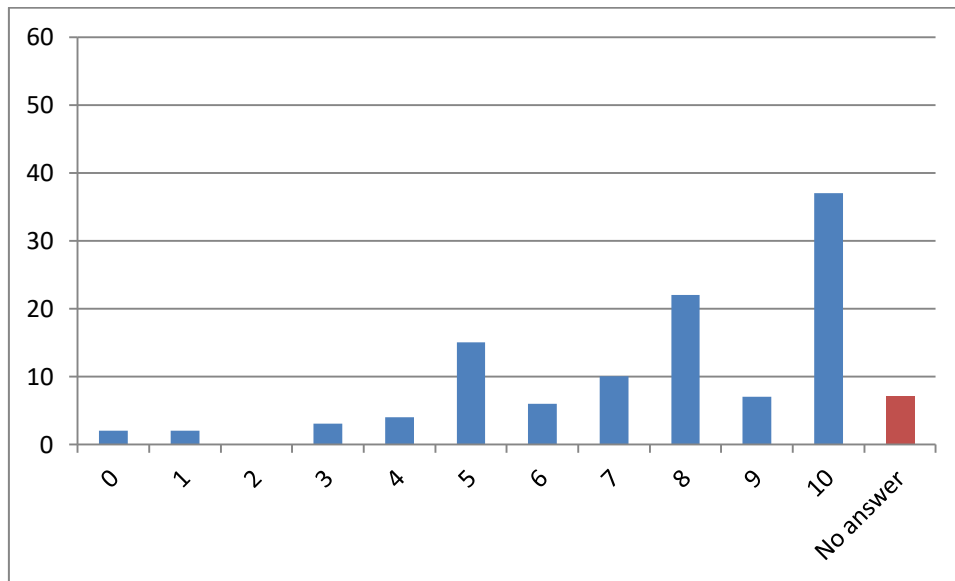
**Possible further analysis: strong support across all age groups (see table below)**



**Qu37**

**I would support the introduction of a volunteer driver initiative for anyone requiring transport to Forth Valley Hospital to attend appointments or for visiting.**

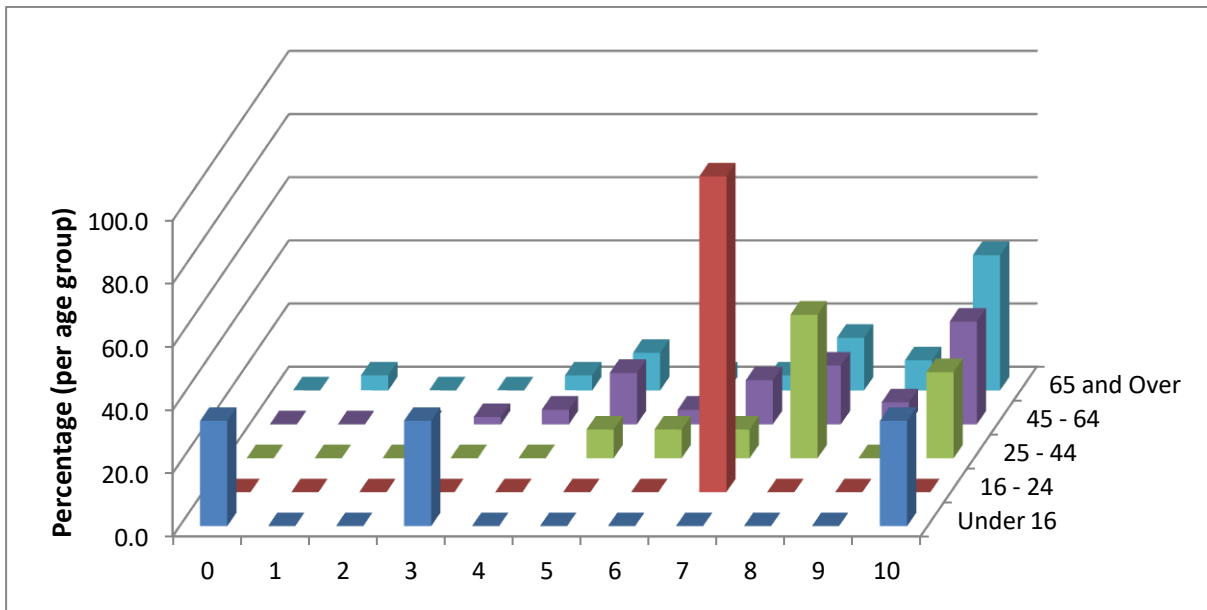
Basic statistics			Distribution			
	Number	%	Value	Count	% over all	
Answered	108	93.9	0	2	1.7	
Not answered	7	6.1	1	2	1.7	
Total:	115	100.0	2	0	0.0	
Mean:	7.56		3	3	2.6	
Mode:	10		4	4	3.5	
Median:	8		5	15	13.0	
			6	6	5.2	
			7	10	8.7	
			8	22	19.1	
			9	7	6.1	
			10	37	32.2	
			No answer	7	6.1	



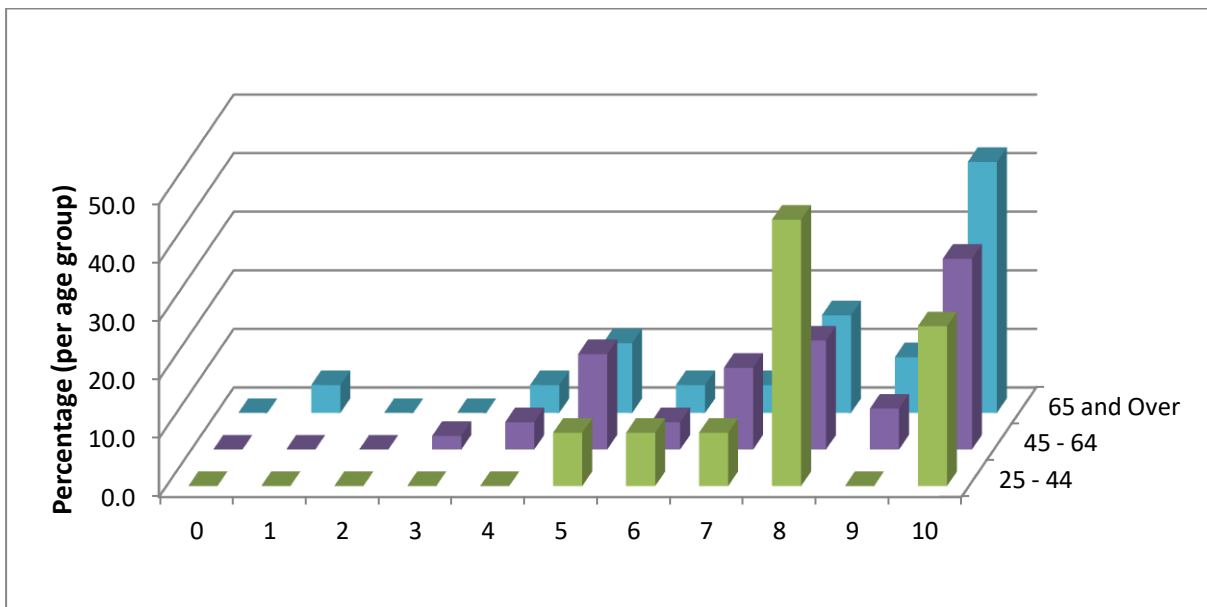
**Commentary:**

Largely positive response obtained (75.9% of scores were over 5), and, by far, the most frequent response being in complete agreement with the statement (score 10).

**Possible further analysis:** strong support across all age groups (see table below)



**Possible further analysis:** strong support across the driving / volunteering age groups (see table below, however, only 16 out of 115 respondents stated they would be 'Willing to be involved')



**Willing to be involved?**

	<b>Number</b>	<b>%</b>
<b>Yes</b>	16	13.9
<b>No</b>	61	53.0
<b>Maybe</b>	30	26.1
<b>Not answered</b>	8	7.0
<b>Total:</b>	115	100.0

